



Initial TW-6 Electronic Knee Board Set Up

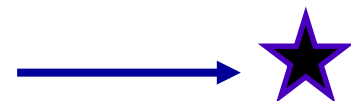




Table of Contents

- [Government Issued iPads](#)
- [Electronic Knee Board Setup](#)
- [BOX Cloud Storage Access](#)
- [ForeFlight Account Setup](#)
- [Additional Resources](#)

Click the star in the lower right corner to return to this page.





Government Issued iPads

You have been issued a government iPad for use during your flight training at Training Air Wing SIX (TW-6).

This iPad is your Electronic Knee Board (EKB). You will use this EKB in Primary, Intermediate and Advanced Student NFO training.

WARNING !!

Though the iPad you have been issued is a government owned device, just like any USB device, it shall NOT be plugged into any government computer. Also, you are NOT allowed to plug it into your home computer via the USB cable. Any connection to the internet shall be done via a secure wireless connection.





Electronic Knee Board Setup

Make sure you have sufficient charge, or the device is plugged in to the charger, and you have access to commercial (personal/home) Wi-Fi, before starting this section!

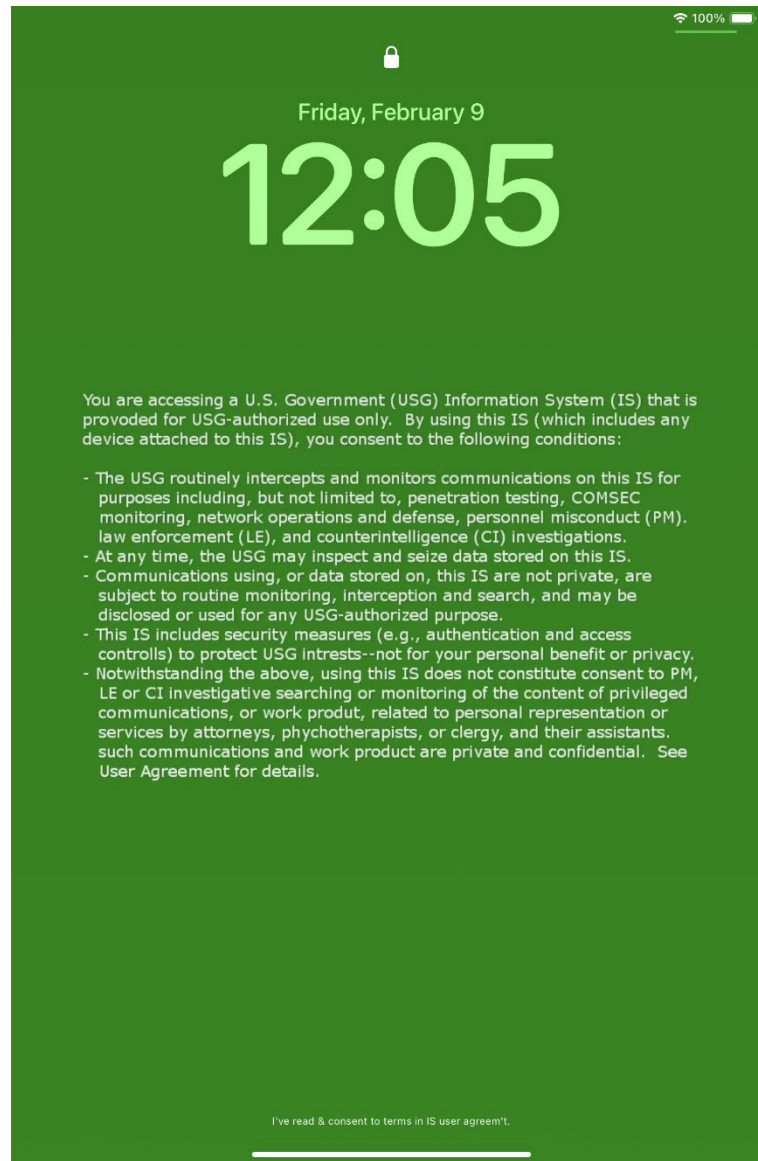
You must use a commercial Wi-Fi source during the initial set up process. Once the device is completely set up, several government furnished Wi-Fi connections will be programmed into the device. TW-6 utilizes the "Bearcat" internet connection, which is available in bldgs. 1853, 1854, 3258 and 3480. The Bearcat SSID and password are programed automatically and cannot be changed. Other secure Wi-Fi connections may be made at any time.





Electronic Knee Board Setup

- Turn the device on by pressing the power button located at the top right hand corner of the iPad.
- After your device boots up, you will see a green message screen like this.
- Press the home button (iPad 5) or slide your finger up from the bottom of the screen (iPad 6).



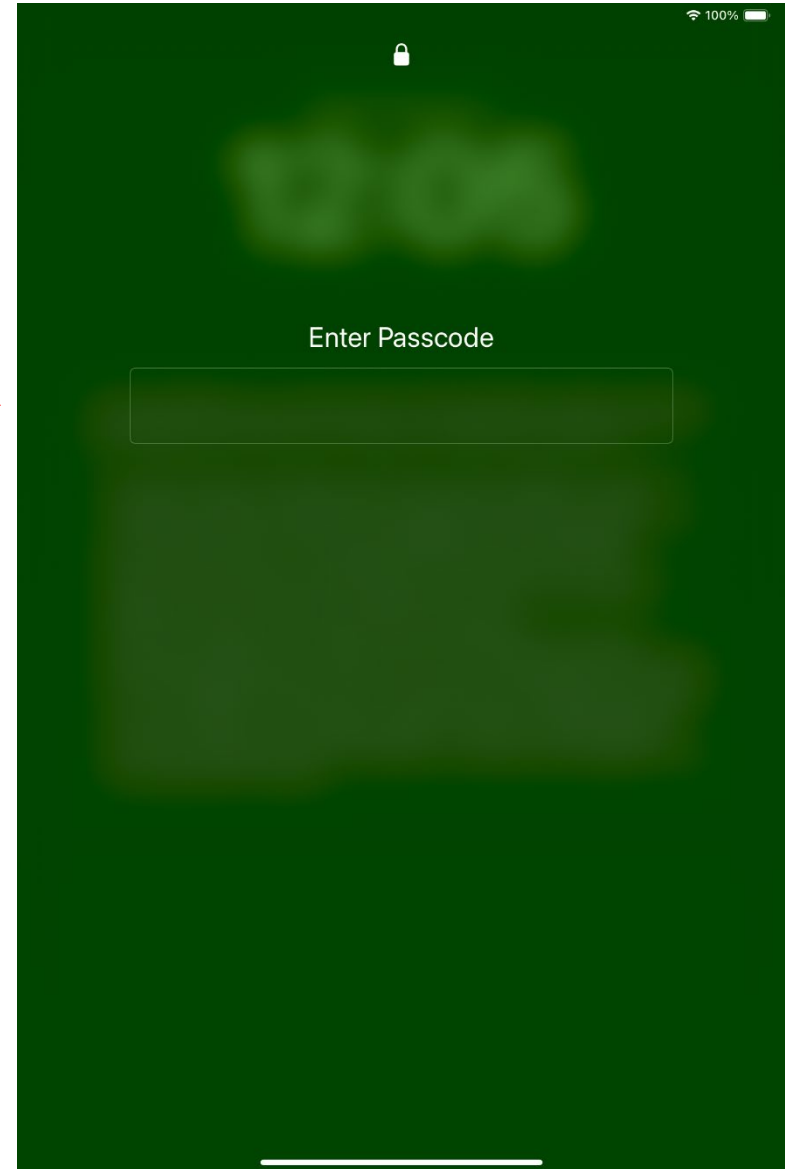


Electronic Knee Board Setup

- You will be prompted to enter a password.
- Enter “navair” and then select “Next.”



*Note - navair is all lower case letters, no quotation marks (“”).





Electronic Knee Board Setup

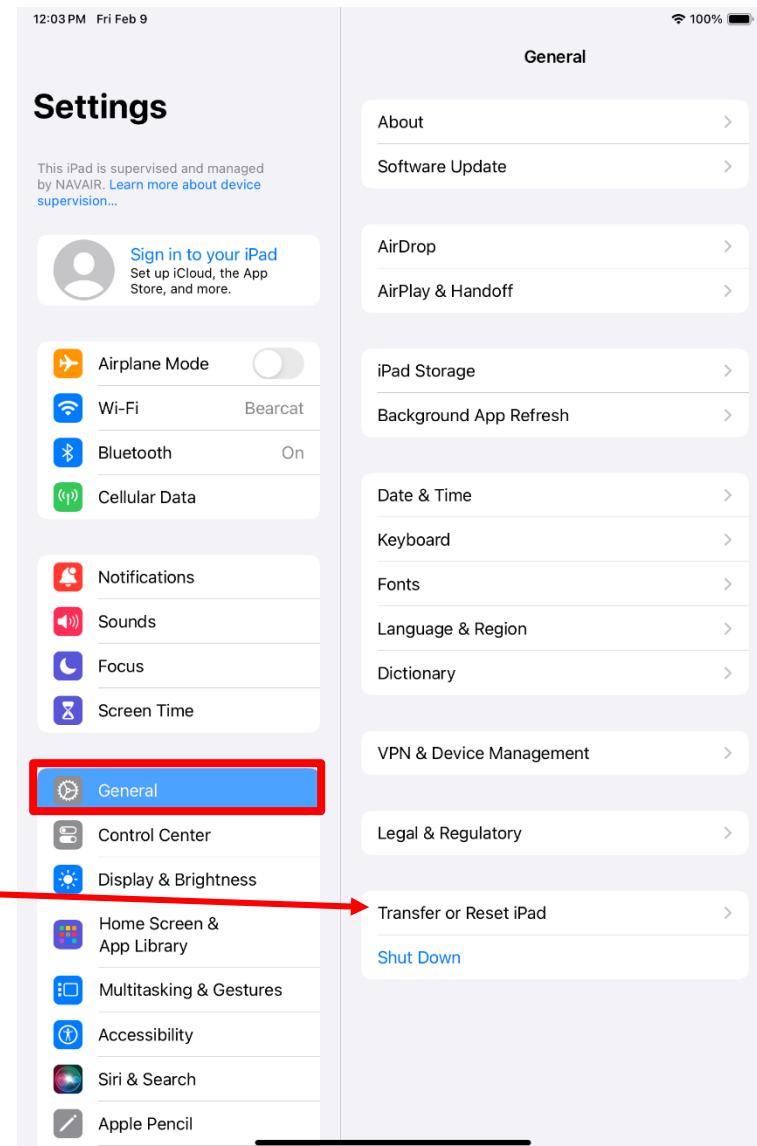
- You should see a screen like this.
- Tap on the Settings icon to open it.





Electronic Knee Board Setup

- You should see a screen like this.
- Tap on the General icon to select it.



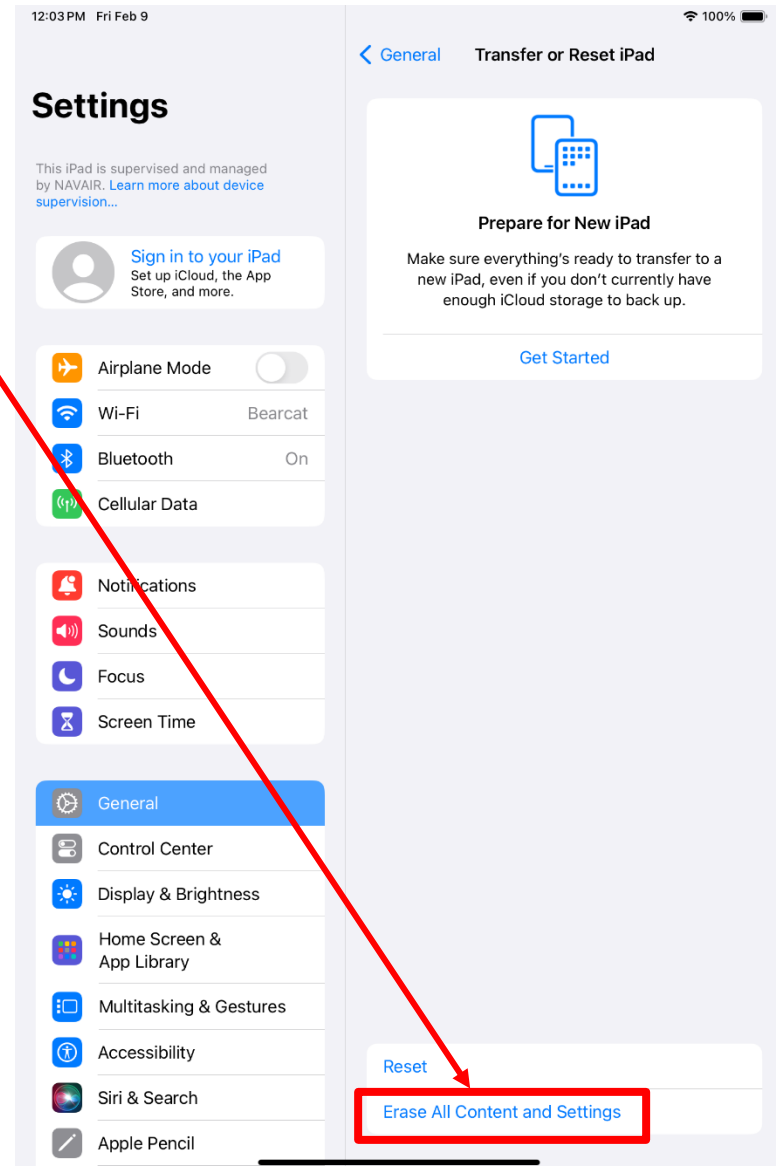
- Then select “Transfer or Reset iPad”





Electronic Knee Board Setup

- You should see a screen like this.
- Select “Erase All Content and Settings”





Electronic Knee Board Setup

12:03 PM Fri Feb 9

100%

- You should see a screen like this.
- Select “Continue”

Erase This iPad

Erasing will remove your personal data so this iPad can be safely traded in or given away.

The following items will be safely removed from this iPad:

Apps and Data
16.77 GB

Continue

[Not Now](#)





Electronic Knee Board Setup

- You should see a screen like this.
- Enter the password “navair”
- Select Next to continue

12:04 PM Fri Feb 9

100%

[< Back](#)

[Next](#)

Passcode for This iPad

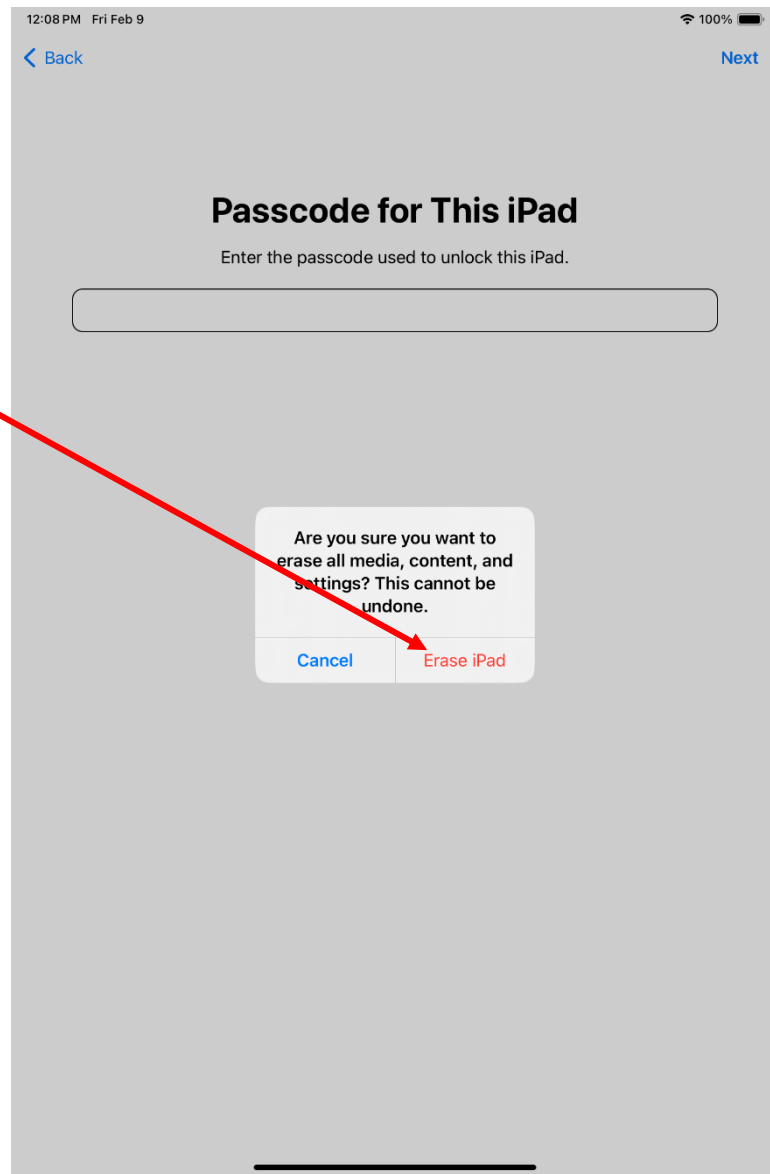
Enter the passcode used to unlock this iPad.





Electronic Knee Board Setup

- You should see a screen like this.
- Select “Erase iPad” to continue
- Your iPad will now begin the reset process. You will see the white Apple logo while the iPad is reset. This process may take a few minutes.





Electronic Knee Board Setup

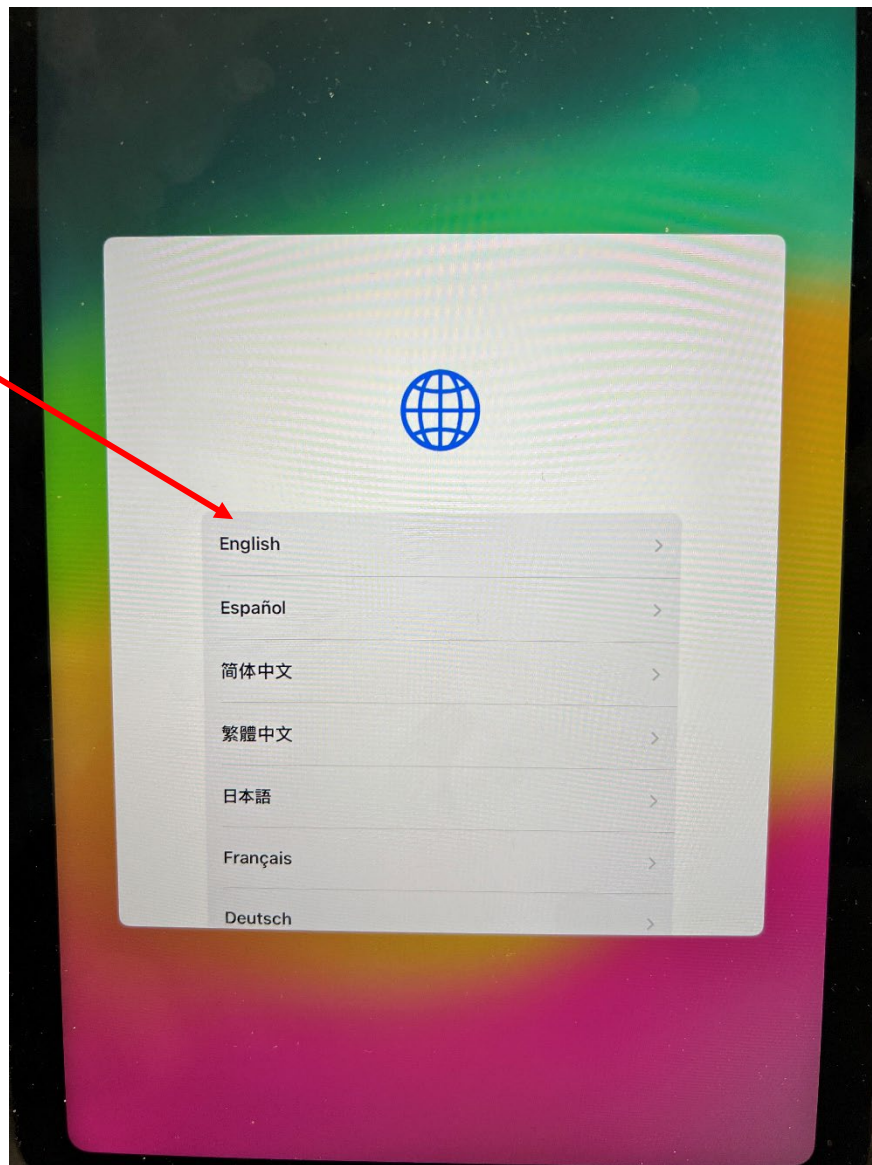
- Once the reset is complete, you should see this screen.
- Press the home button (iPad 5) or slide your finger up from the bottom of the screen (iPad 6).





Electronic Knee Board Setup

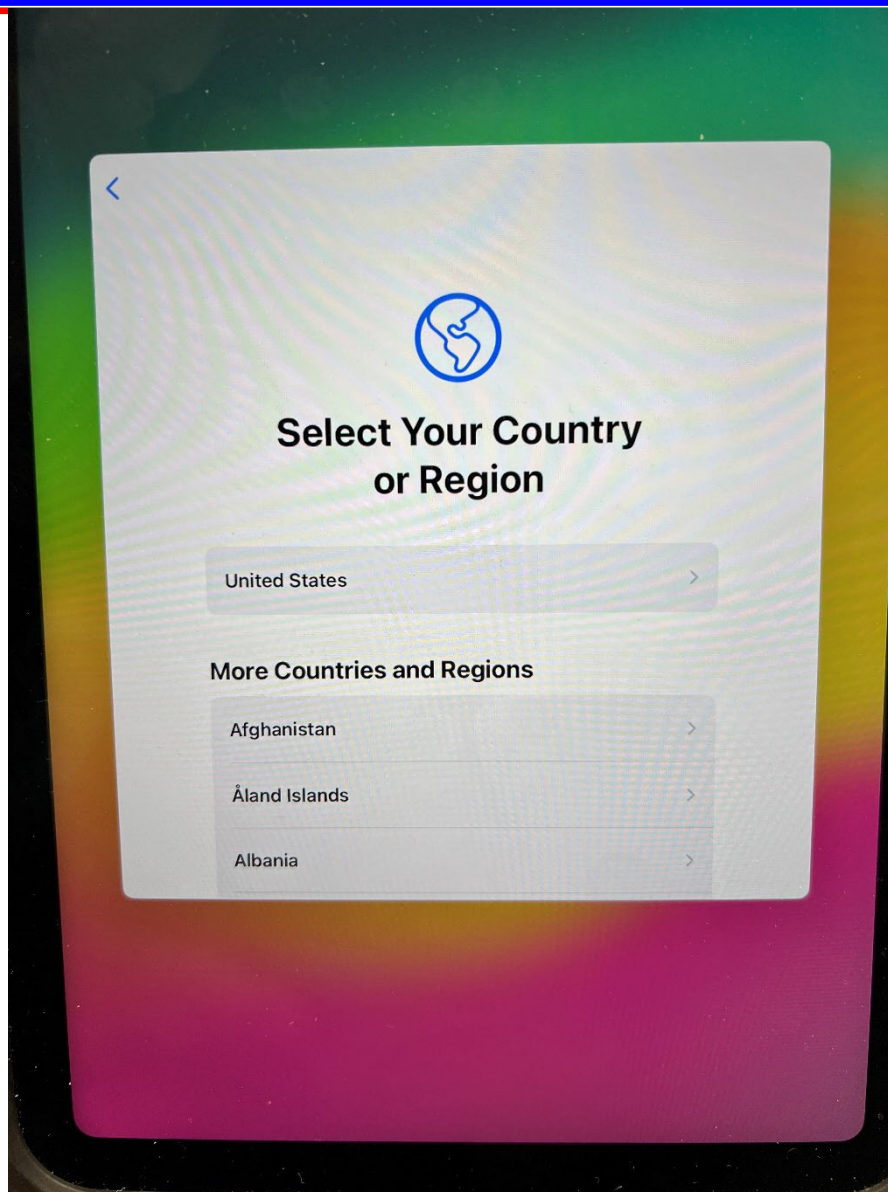
- You should see this screen.
- Select “English” to continue.





Electronic Knee Board Setup

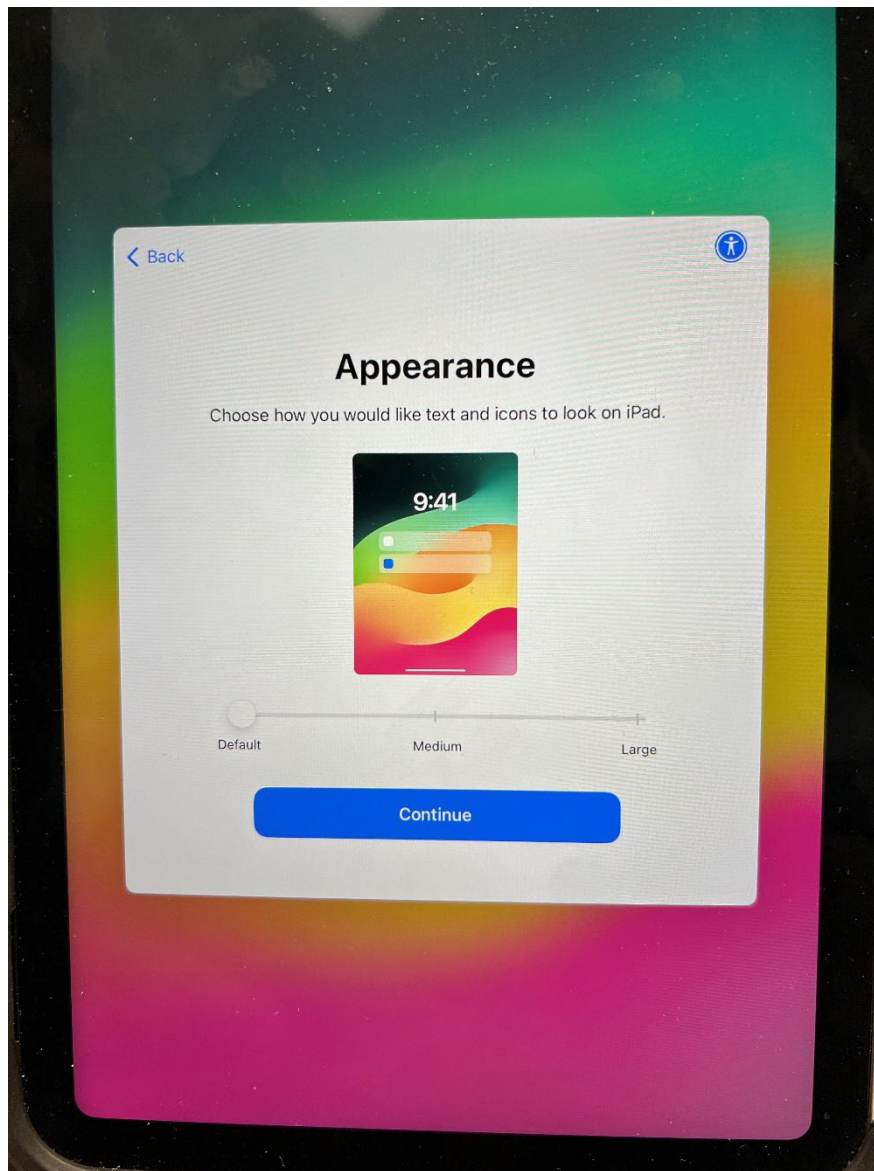
- You should see this screen.
- Select “United States” to continue.





Electronic Knee Board Setup

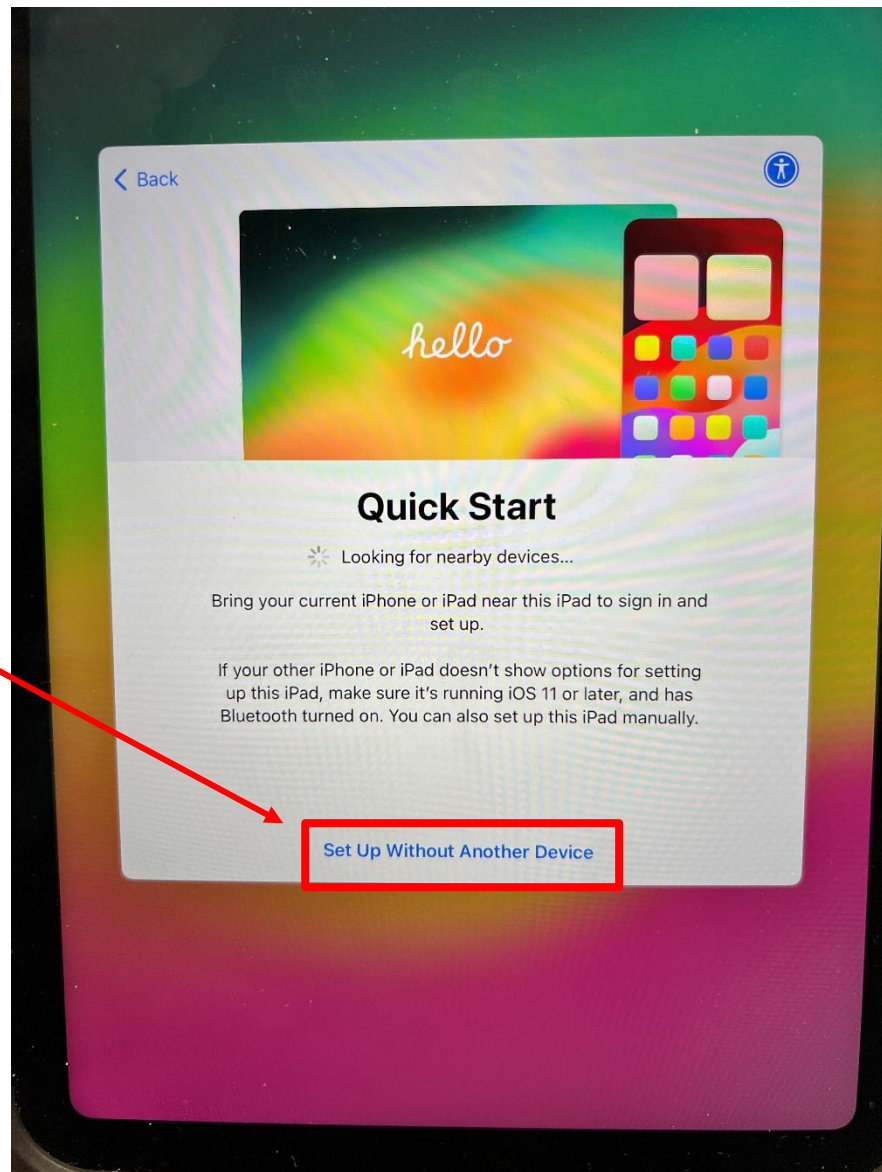
- You should see this screen.
- You may set appearance to your desired setting.
- Select “Continue” when ready.





Electronic Knee Board Setup

- You should see this screen.
- Select “Set Up Without Another Device”

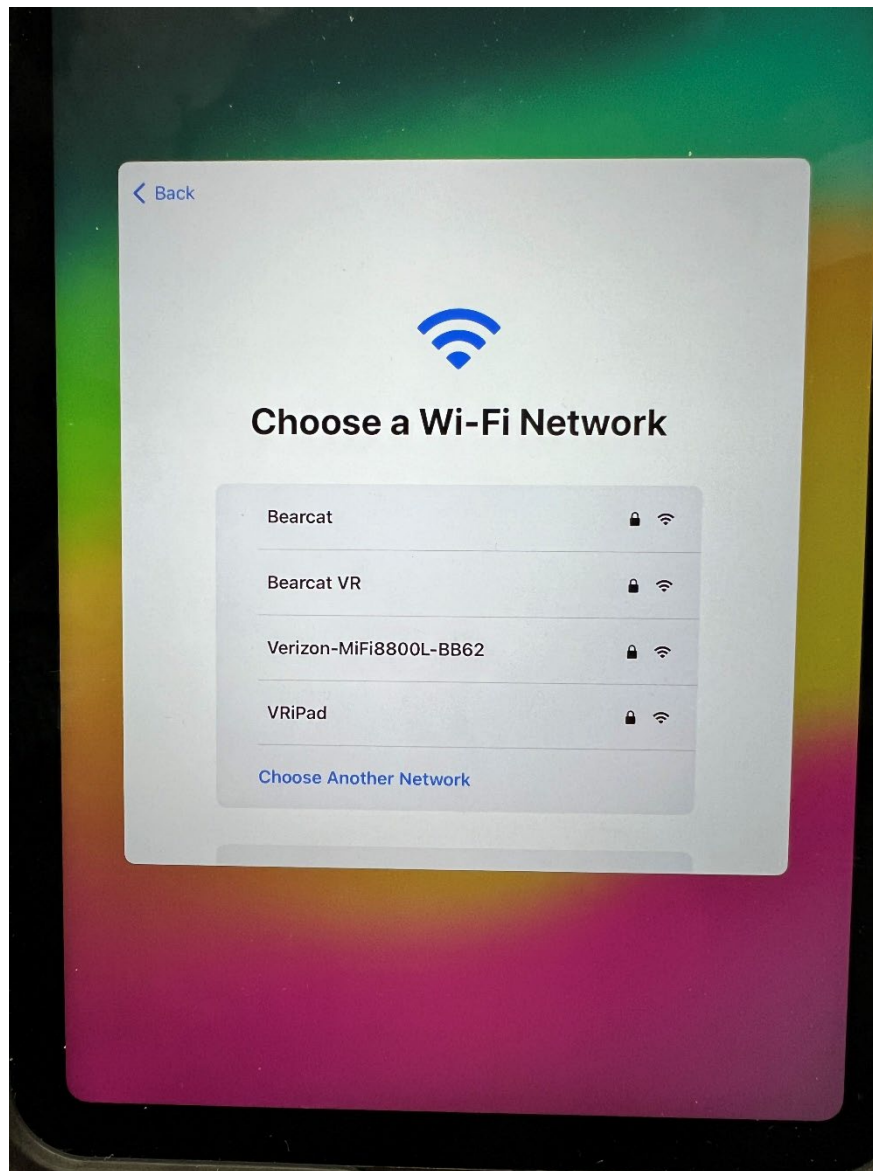




Electronic Knee Board Setup

- You should see this screen.
- Select an available secure Wi-Fi Network and log on to it.

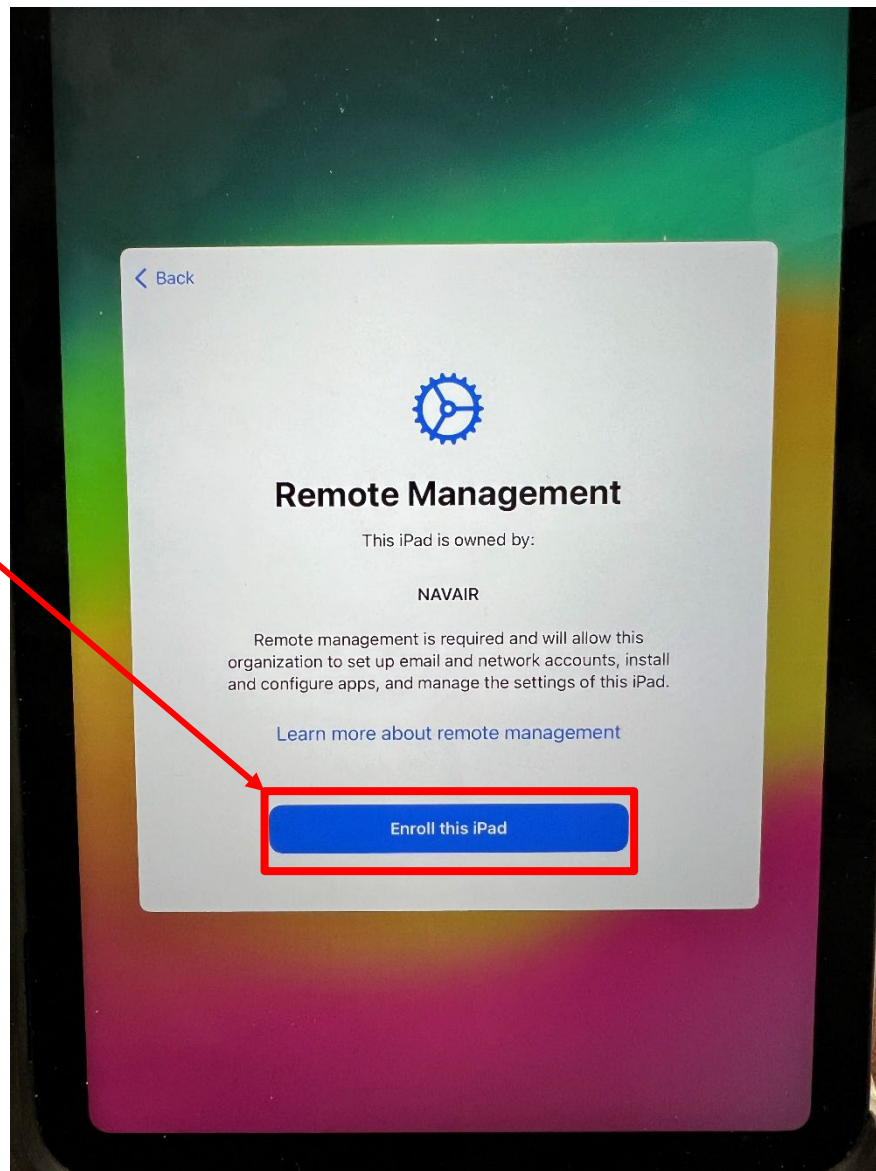
*Note, this screen shot is for example only. You will see these networks once your EKB is reset and you are in a government space, such as Griffith Hall, hanger 1853 or 1854, or the simulator facility, building 3480.





Electronic Knee Board Setup

- Once you are connected to a network, you will see this screen.
- Select “Enroll this iPad”



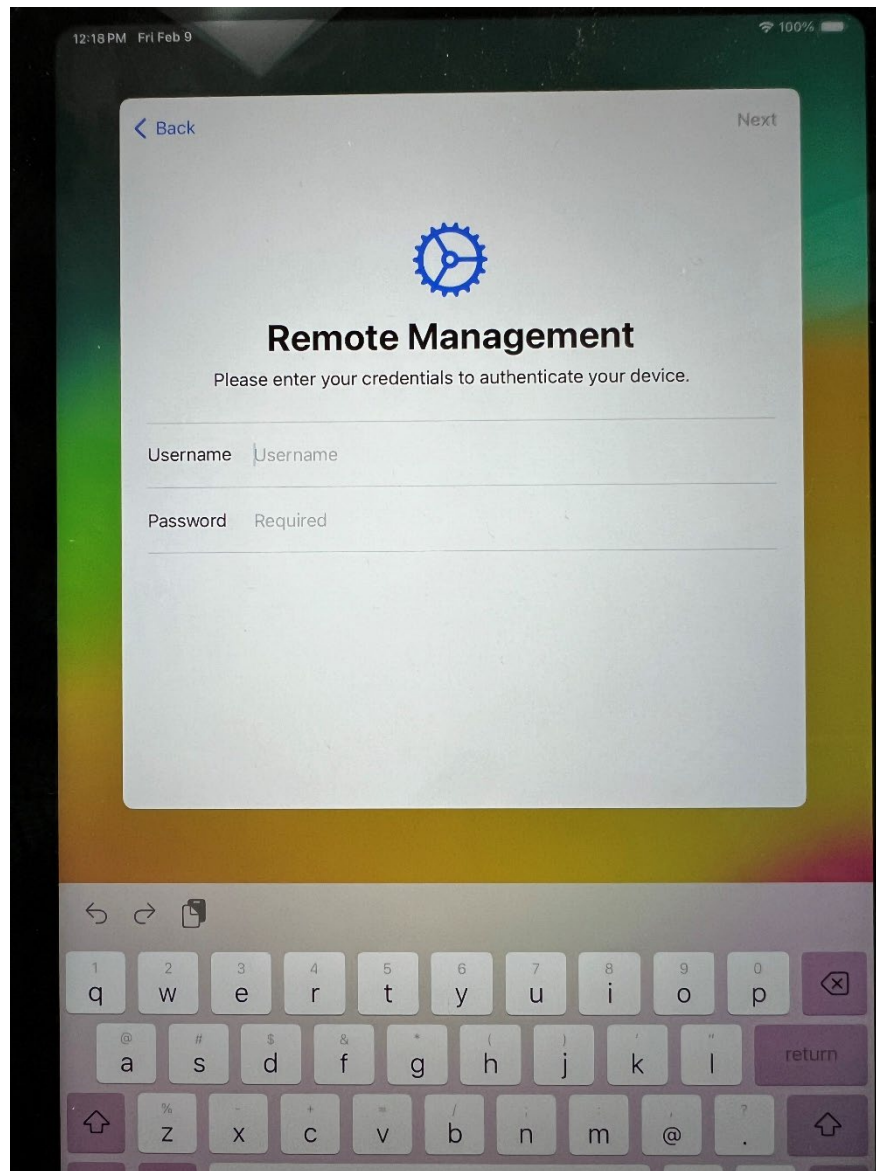


Electronic Knee Board Setup

- You will see this screen.
- Enter “ctw6” for Username
- Enter “ctw6” for Password

Note, all lower case letters, no quotation marks (“”)

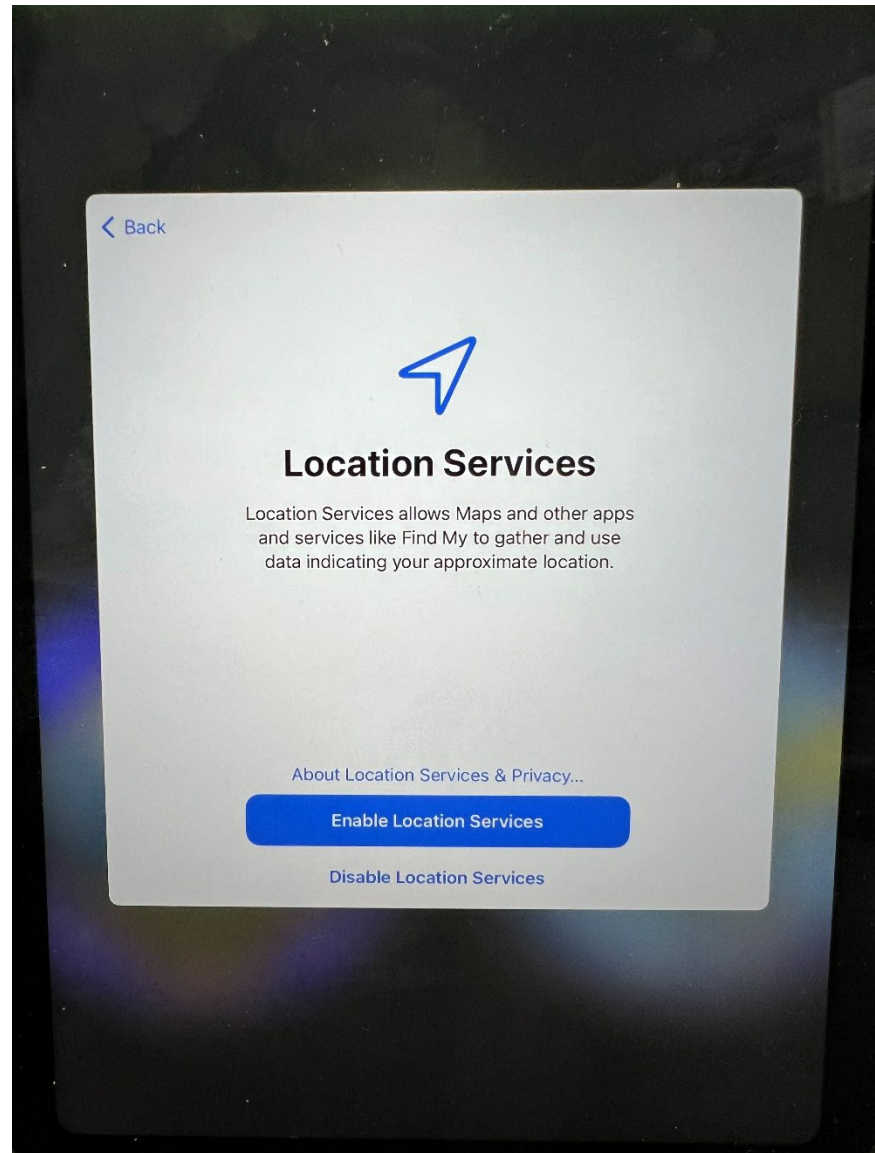
The EKB TW-6 Mobile Data Manager (MDM) will begin configuring your iPad to the proper settings.





Electronic Knee Board Setup

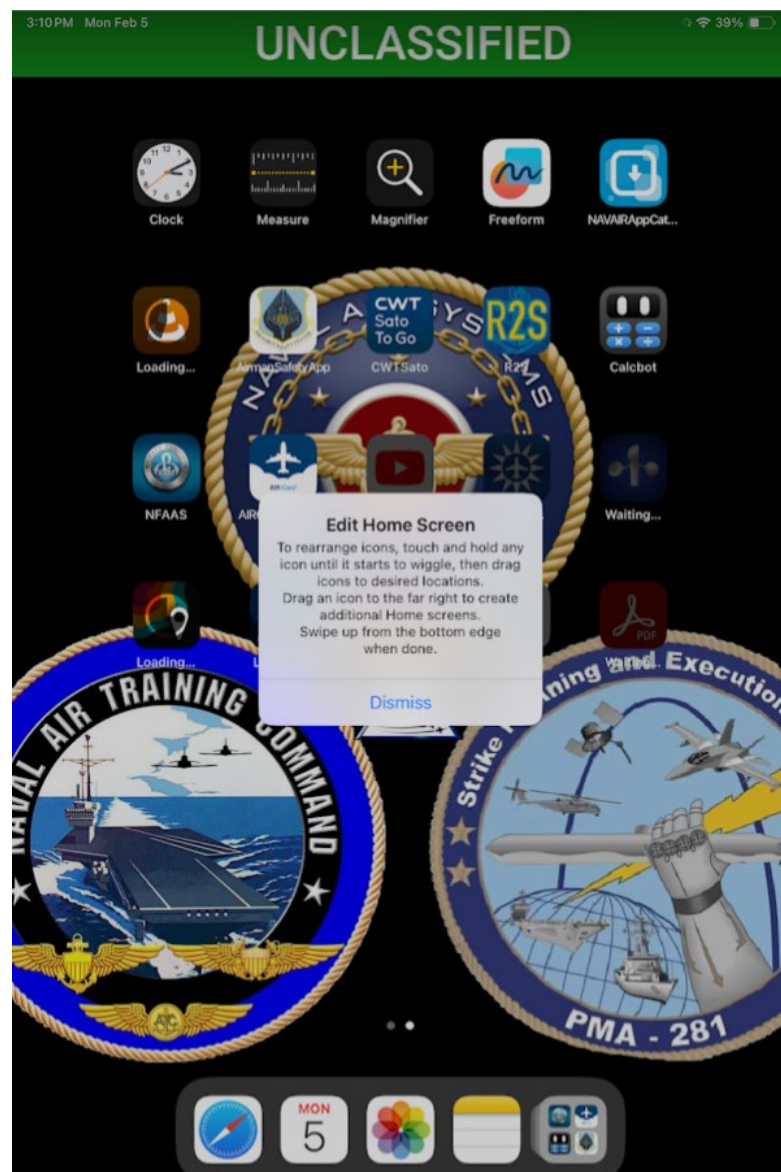
- You will see this screen after a short period.
- Select “Enable Location Services”





Electronic Knee Board Setup

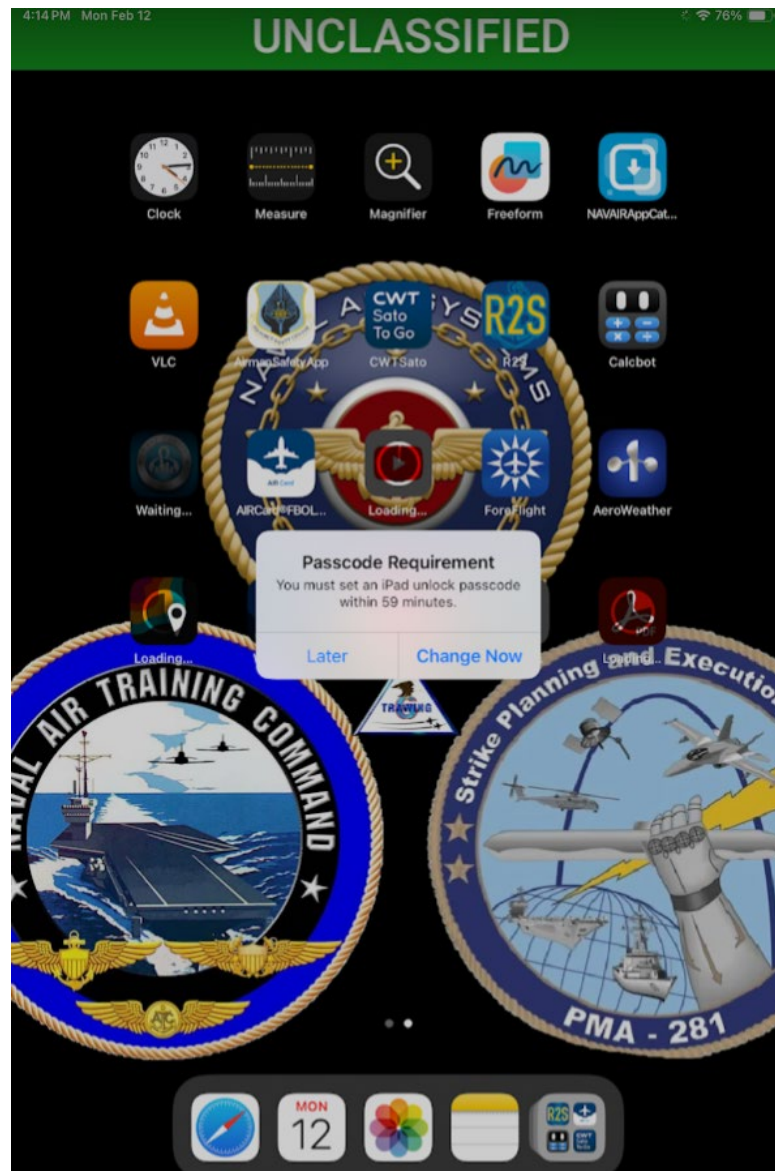
- You should “Dismiss” this notification, if it’s presented.
- You are allowed to move applications around the desktop just as you would any IOS/tablet device.
- You may also delete applications by pressing the icon and holding until a menu appears.





Electronic Knee Board Setup

- As your iPad begins receiving the TW-6 MDM configuration, you will see this screen with the CTW-6 logo in the center of the screen.
 - After a short period you will see this screen and pop up window prompting you to create a passcode.
 - Select “Change Now”
 - Enter “navair” then Continue
 - Enter “navair” again, then Set Passcode
- * Note, all lower case letters, no quotation marks (“”)





Electronic Knee Board Setup

- Your iPad should look like this once the TW-6 MDM has completed its download.
- Once all applications have been downloaded, you may begin using your EKB.
- The next section will guide you through modifying a few device settings that will help save battery life and make using the device easier.





Electronic Knee Board Setup

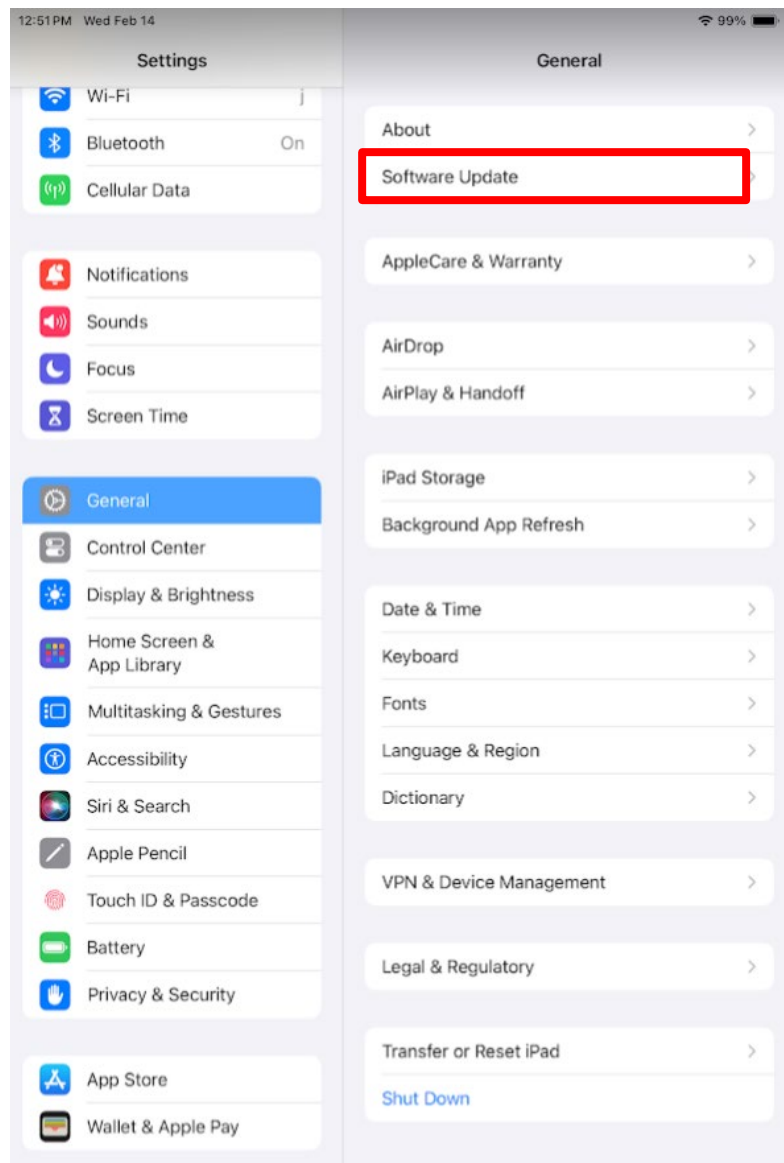
- Tap on the Settings icon to open it.





Electronic Knee Board Setup

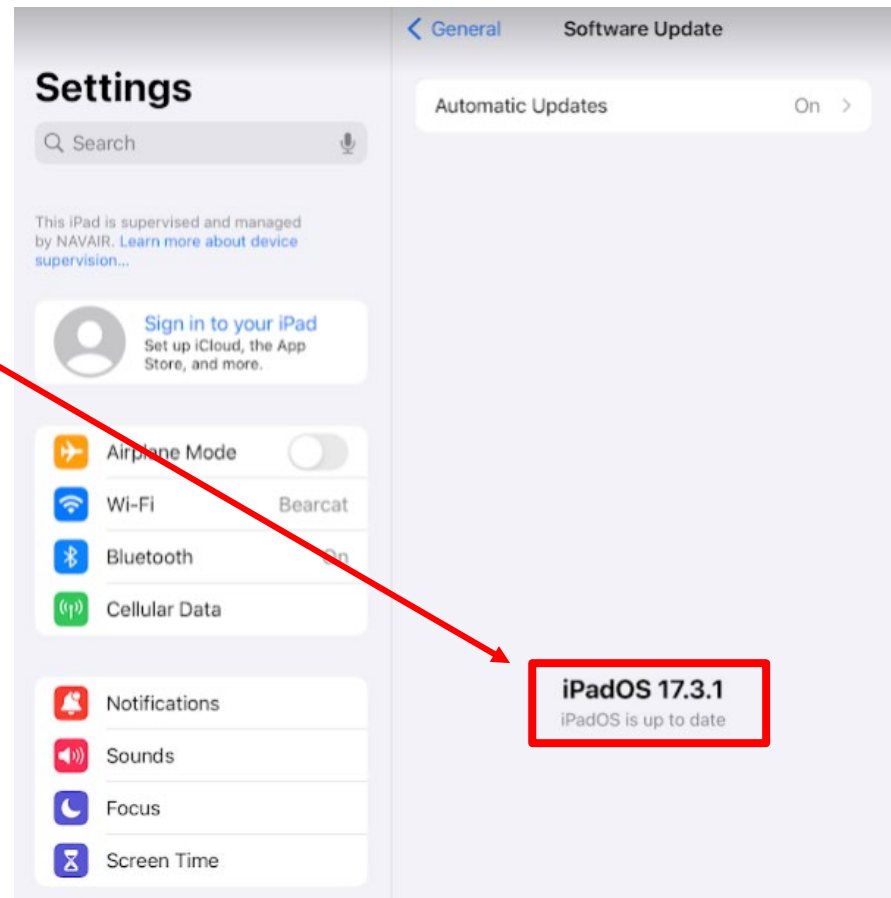
- From the General setting menu, select Software Update





Electronic Knee Board Setup

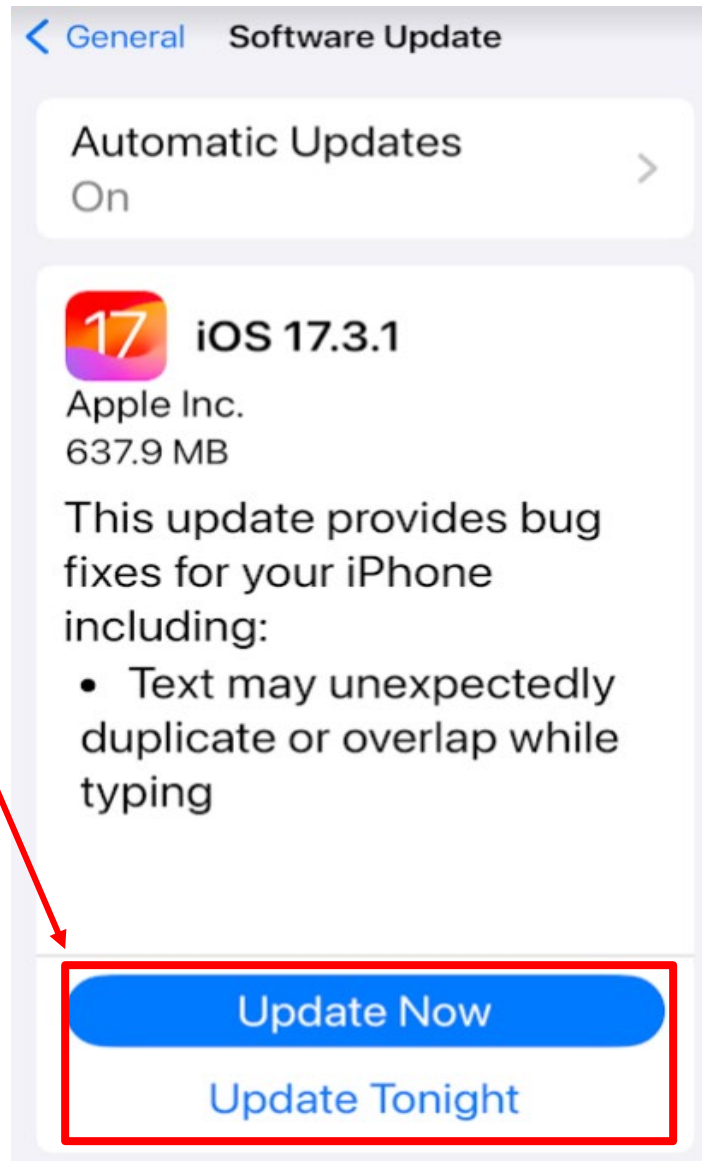
- If the iOS is up to date, you will see this notification screen





Electronic Knee Board Setup

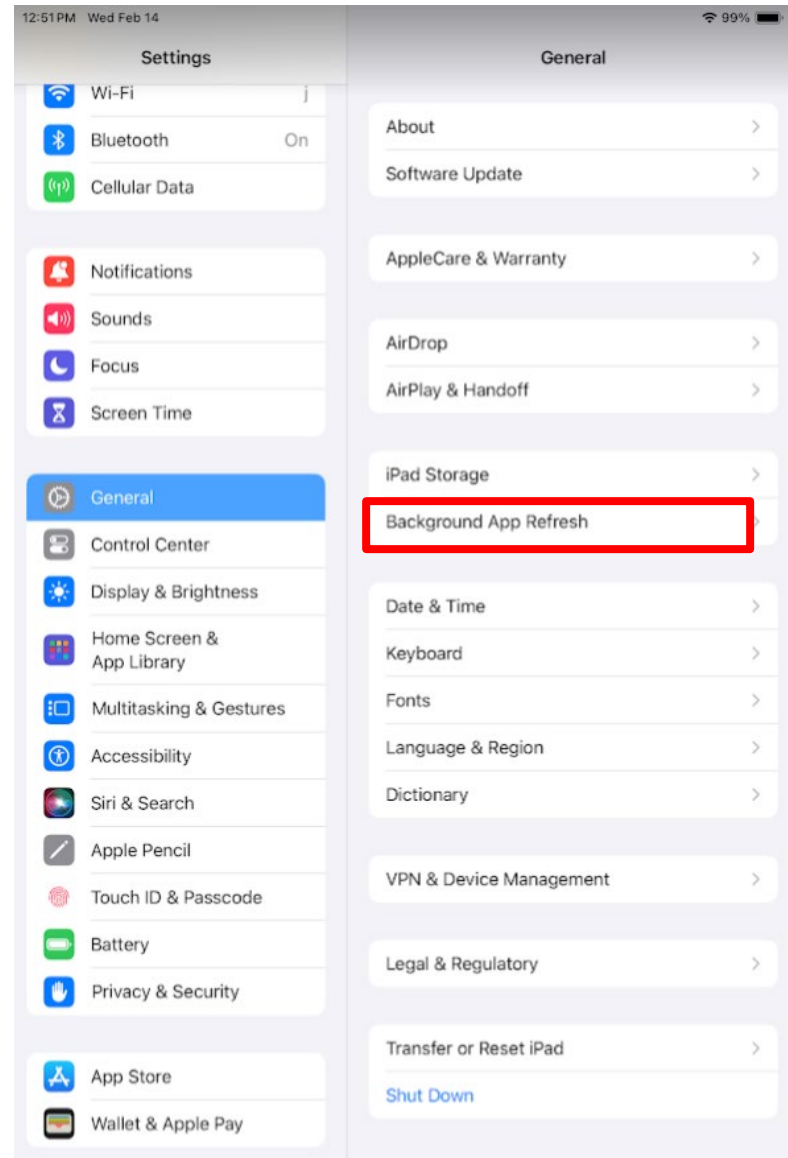
- If the iOS is not up to date, you will see this notification screen
- You do not need to update before continuing to set up your EKB, but you must update as soon as possible.
- If your EKB becomes too far out of date (old iOS version), the device will become inoperable.





Electronic Knee Board Setup

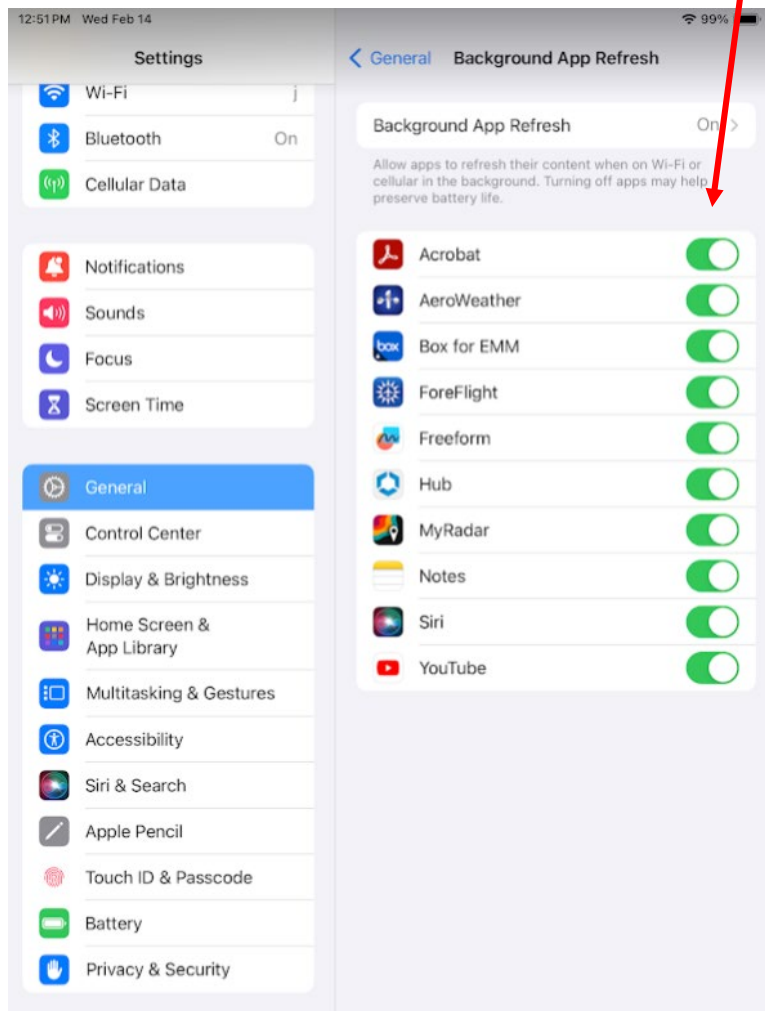
- From the General setting menu, select Background App Refresh.



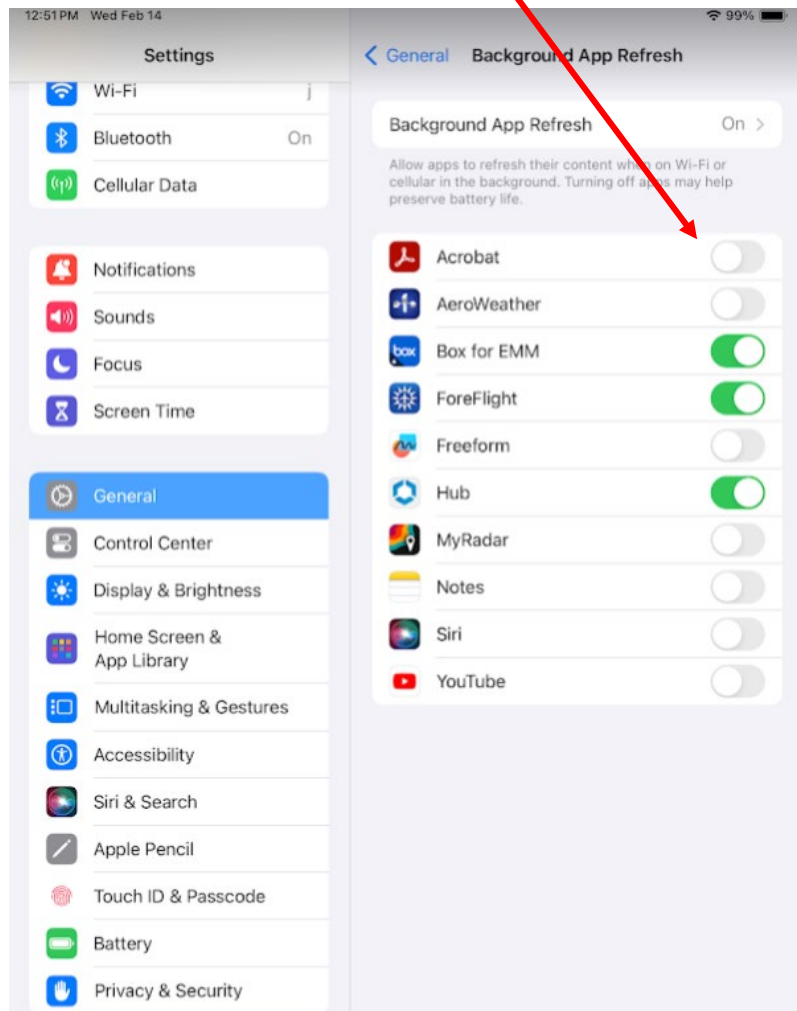


Electronic Knee Board Setup

Adjust the app sliders from this



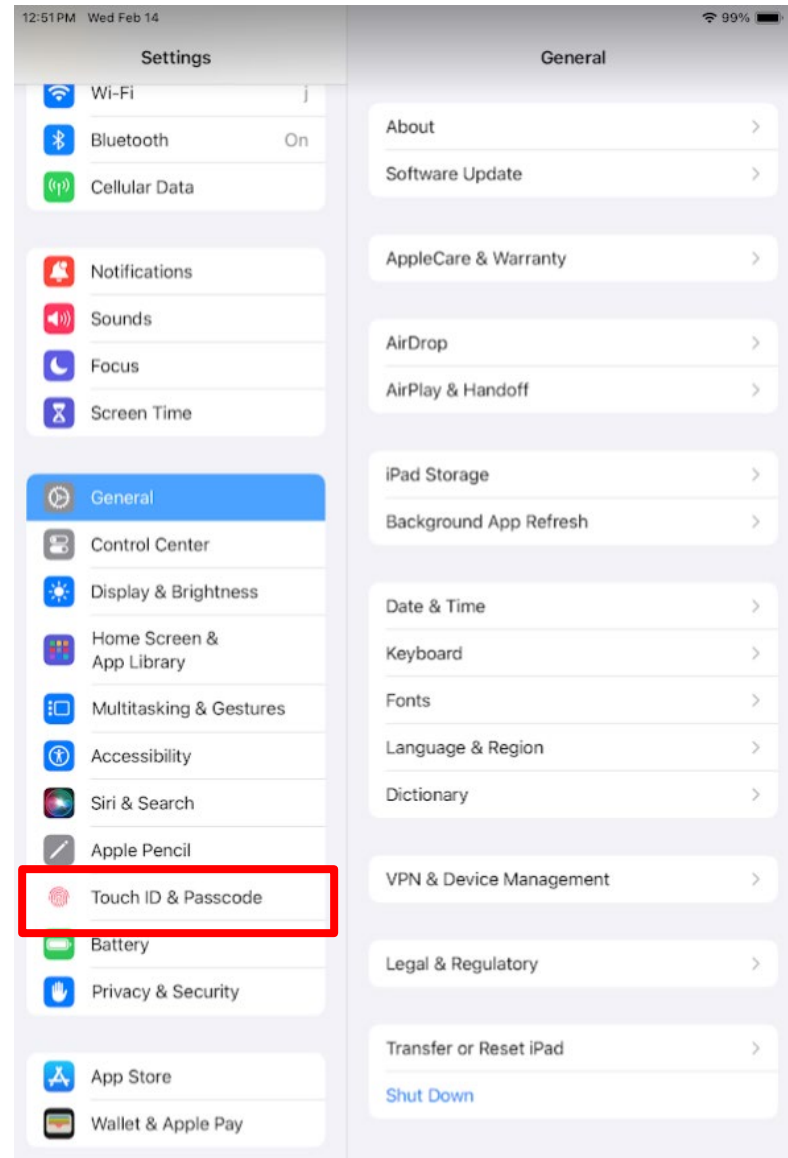
To this





Electronic Knee Board Setup

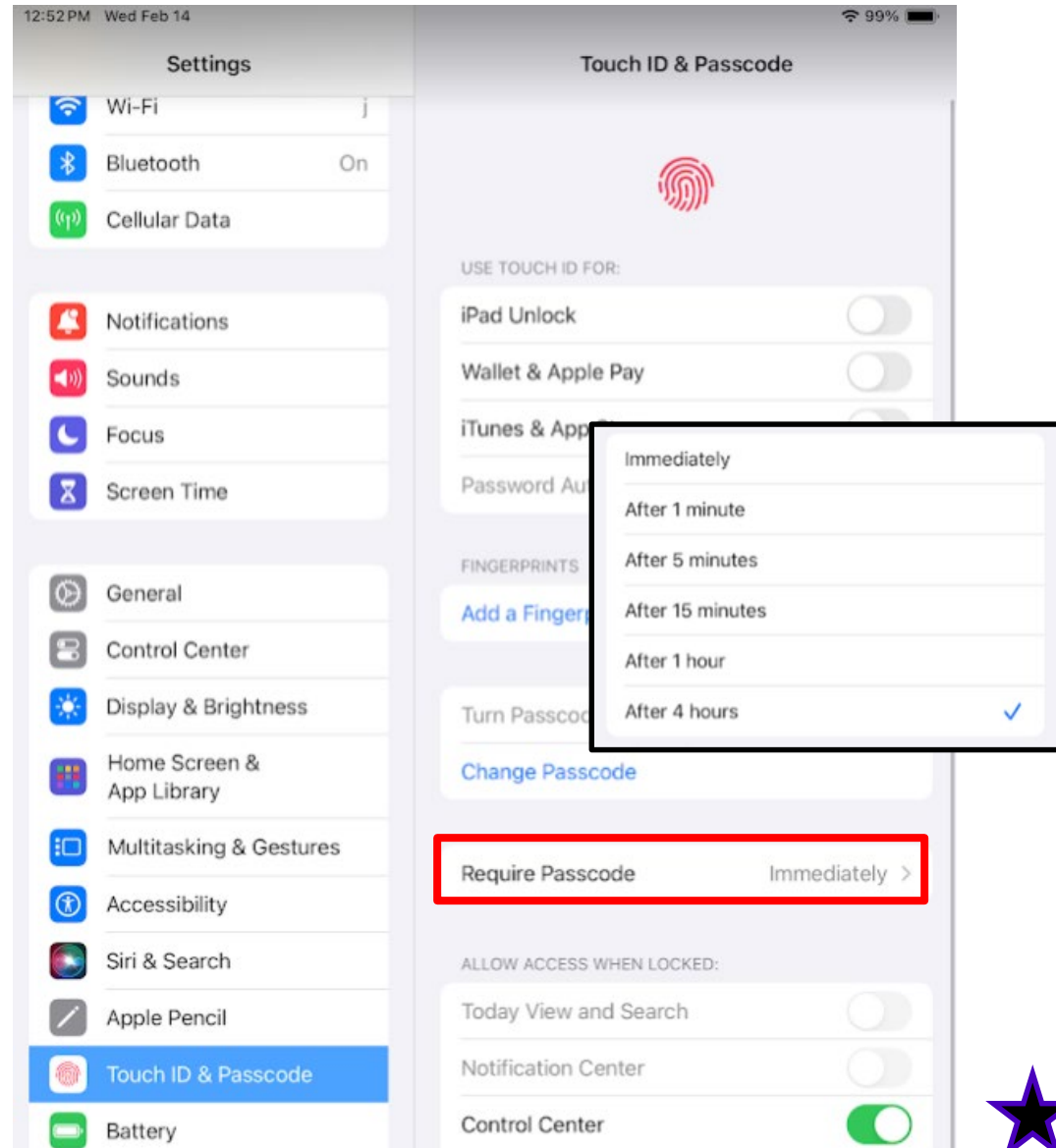
- Select Touch ID and Passcode.
- Enter your password.





Electronic Knee Board Setup

- Select Require Passcode. The default setting is Immediately.
- Select “After 4 hours”
- You may also enable Fingerprint access to unlock the device.





Electronic Knee Board Setup

- Your iPad should look like this once the MDM has completed its download.
- Once all applications have been downloaded, you may begin using your EKB.
- The next section of this guide will help you set up your BOX access.
- Box is similar to Google Drive, and it contains all your training documents (e.g., FTIs and MCGs).





BOX Cloud Storage

- Select the blue Box icon.

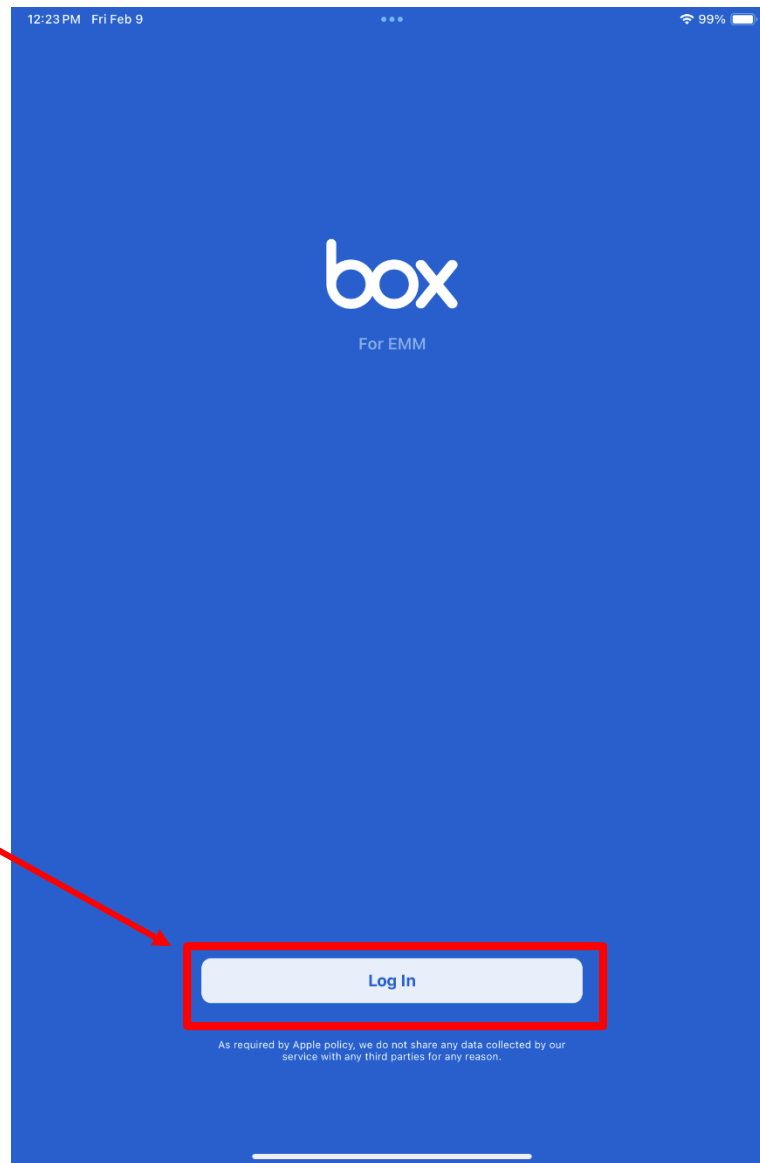




BOX Cloud Storage

- Your screen should look like this.

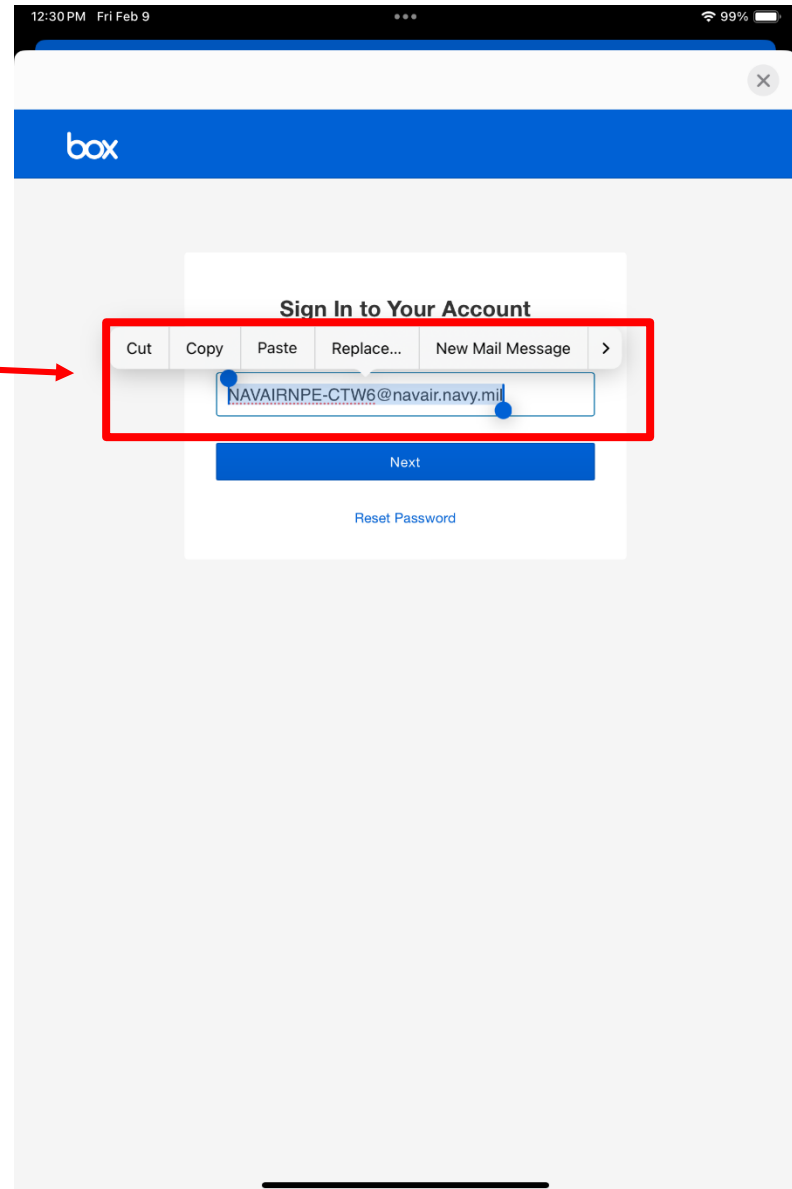
- Select “Log In”





BOX Cloud Storage

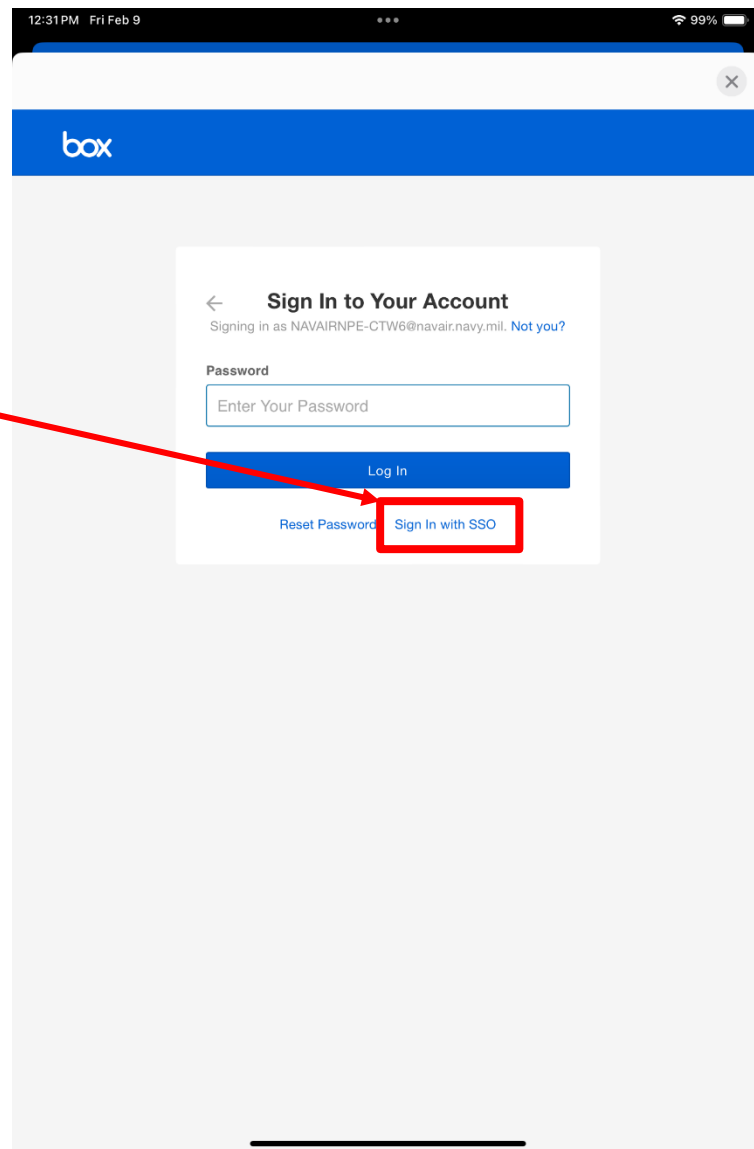
- Your screen should look like this.
- You will need to copy the email address that is automatically populated in this field.
- Once you have copied the address, select “Next”





BOX Cloud Storage

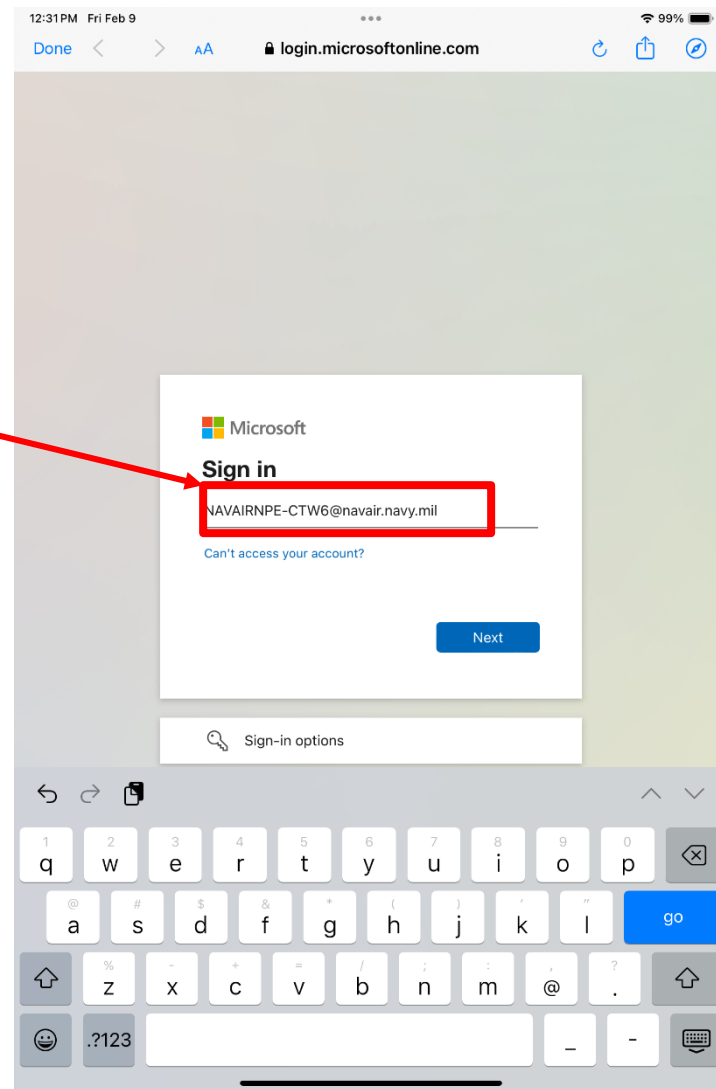
- Your screen should look like this.
- There is no password required.
- Select “Sign In with SSO”





BOX Cloud Storage

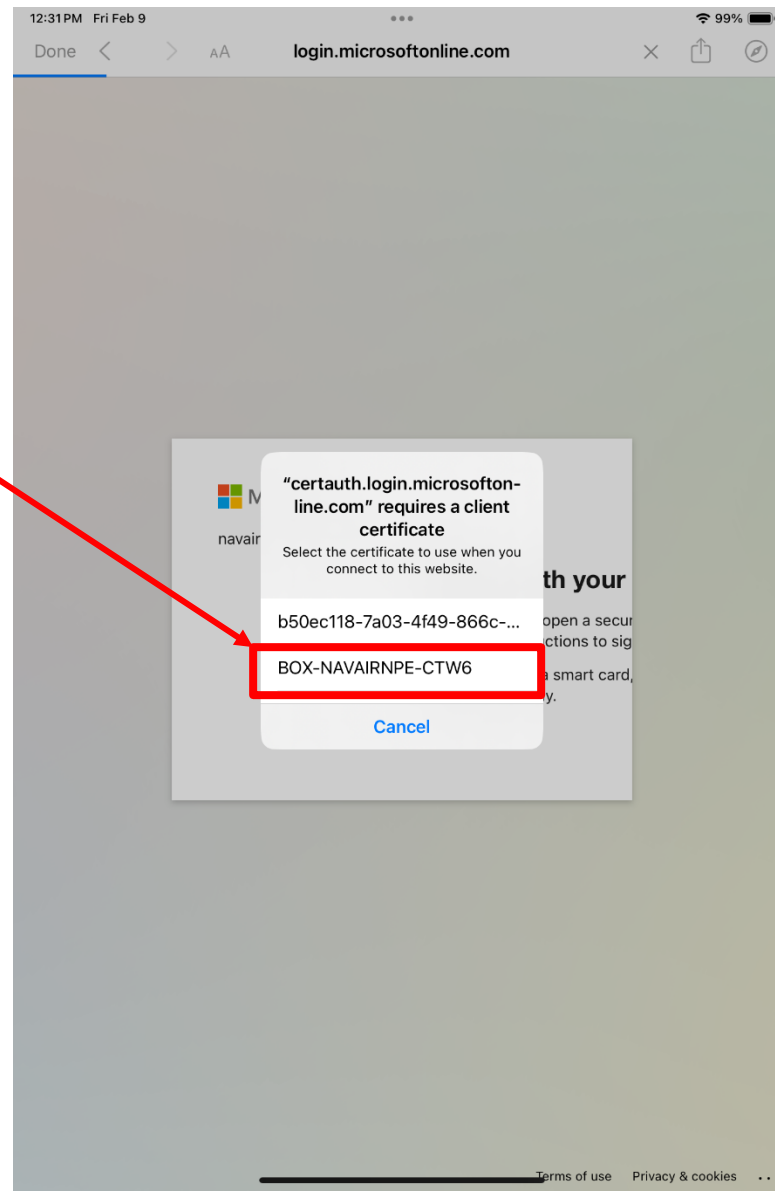
- Your screen should look like this.
- You will need to paste the email address you copied from the previous screen to the blank field on this screen.
- Select “Next” when ready.





BOX Cloud Storage

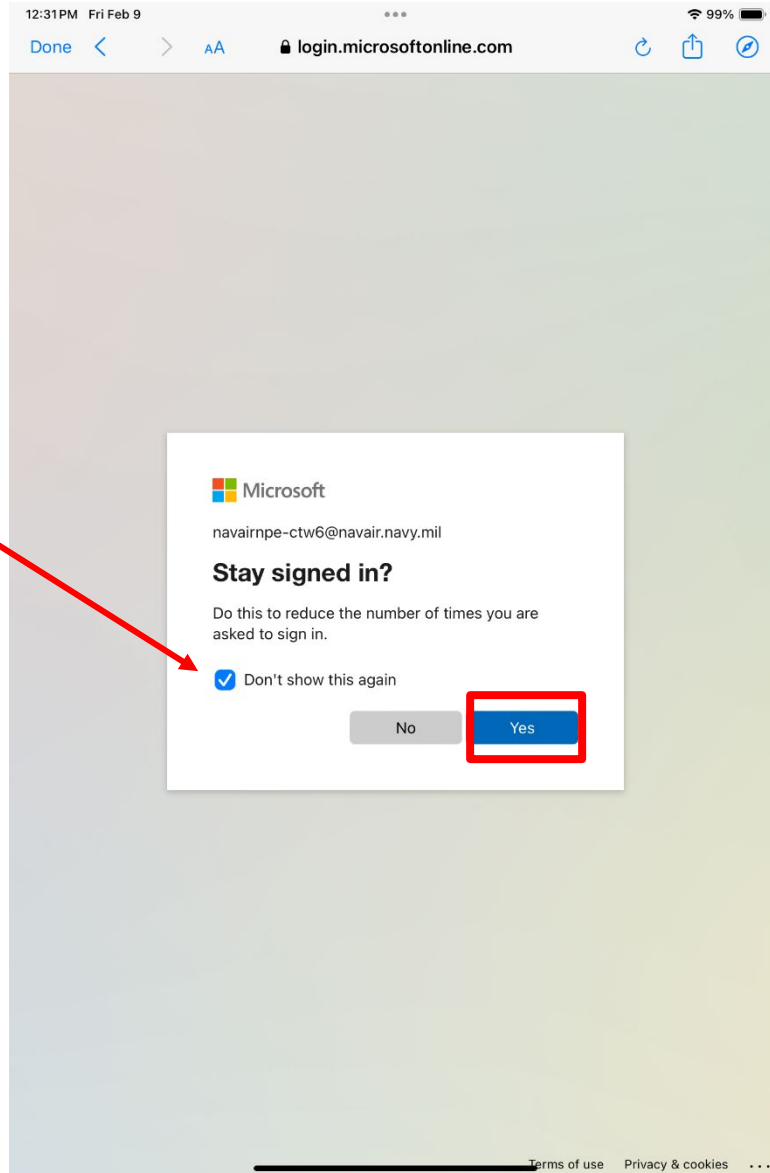
- Your screen should look like this.
- Select “BOX-NAVAIRNPE-CTW-6” from the choices shown.





BOX Cloud Storage

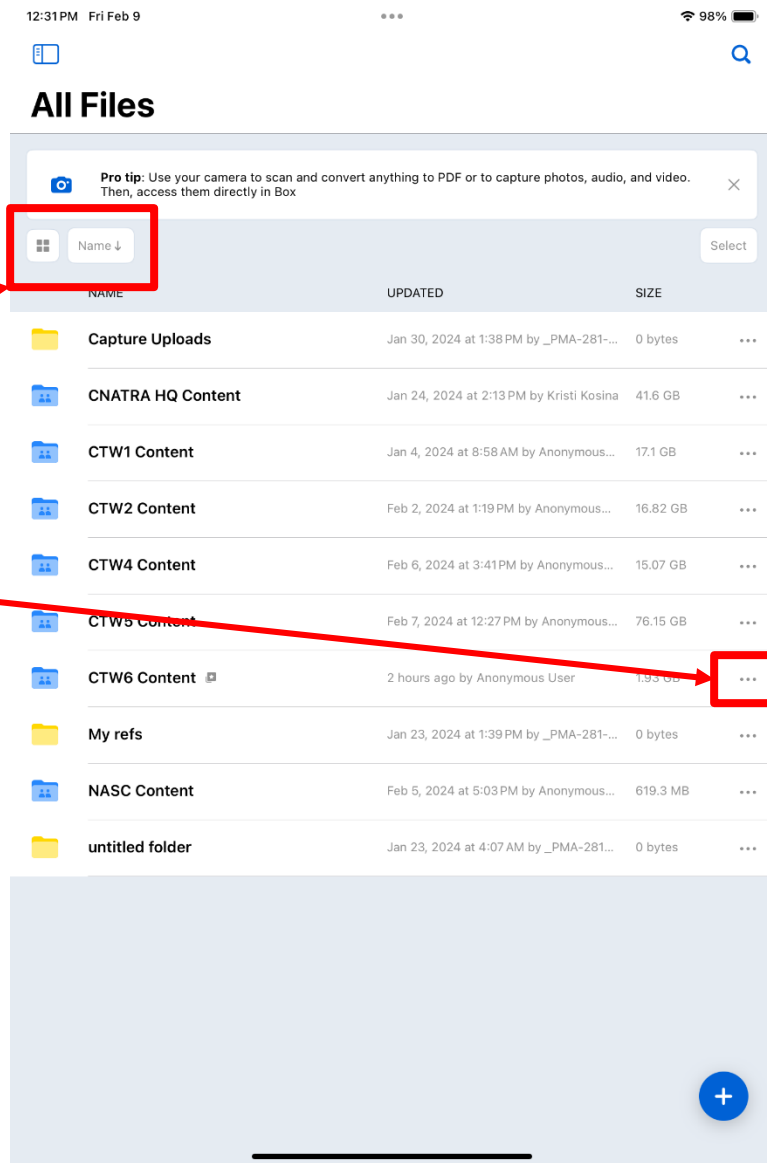
- Your screen should look like this.
- Select the check box for “Don’t show this again”
- Select “Yes” when ready.





BOX Cloud Storage

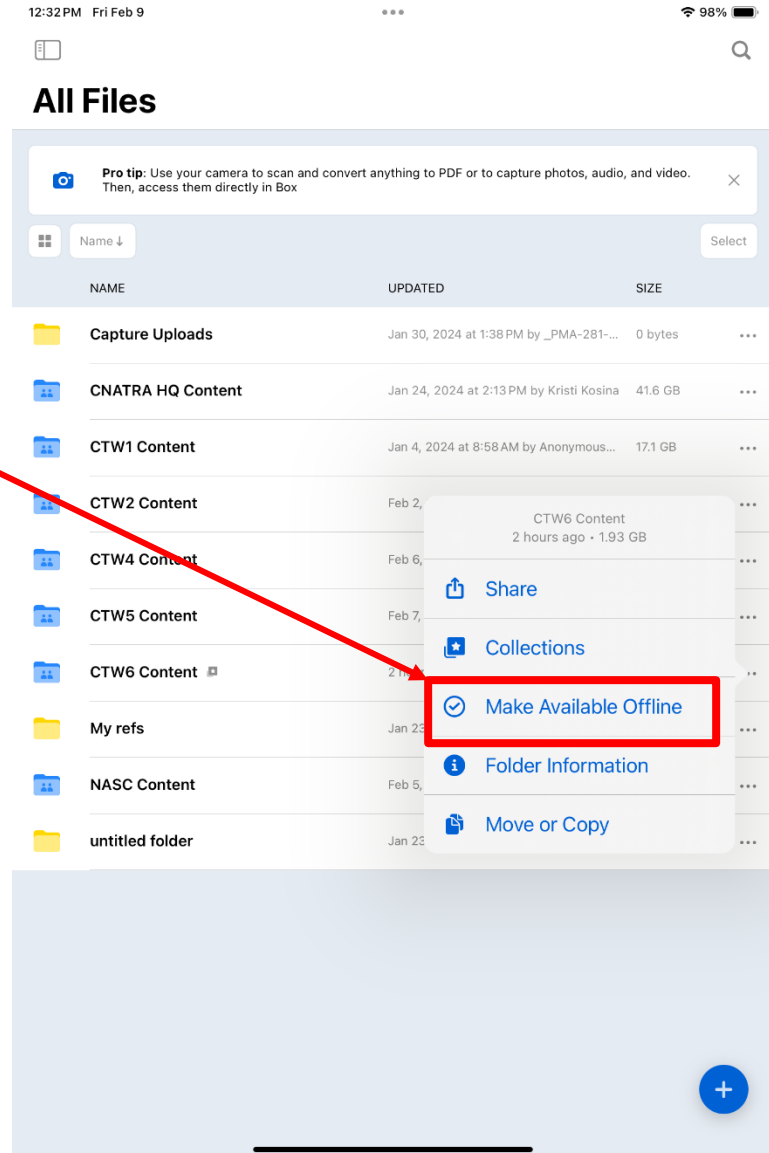
- Your screen should look like this.
- You may organize the folder and file list as you desire by selecting from the options in the boxes indicated here
- Once you have set up your list, select the ellipsis (three little dots) to the right of “CTW6 Content”





BOX Cloud Storage

- Your screen should look like this.
- Select “Make Available Offline” from the menu
- Box will now download the entire folder contents for CTW6. This will ensure you have access to Box files while you are not connected to the internet, such as while airborne.





BOX Cloud Storage

- You may select the CTW6 Content folder at any time. In it, you will see folders for the contents indicated by the folder name.
- Some folders have subfolders. Feel free to explore and become accustomed to locating items you will need such as MCGs, FTIs, and NATOPS materials.
- Once you have completed this section, please proceed to the next page in this guide.

12:32 PM Fri Feb 9 98%

< All Files CTW6 Content

Pro tip: Use your camera to scan and convert anything to PDF or to capture photos, audio, and video. Then, access them directly in Box.

Name ↓ Select

Syncing • 1 remaining

| NAME | UPDATED | SIZE |
|------------------------------------|---|--------------|
| CNATRA Instructions | Oct 3, 2023 at 11:01AM by Anonymous... | 9.8 MB ... |
| CTW-6 CIS Fidelity Tech. | Jan 11, 2024 at 9:47 AM by Anonymous... | 196.5 MB ... |
| CTW-6 Instructions | Nov 28, 2023 at 8:13 AM by Anonymou... | 13.5 MB ... |
| EKB Guides | Aug 1, 2023 at 3:52 PM by Tony Andreo... | 6.9 MB ... |
| General Flight Planning | Jan 5, 2024 at 10:14 AM by Anonymous... | 90.7 MB ... |
| General Instructions & Info | Jan 5, 2024 at 10:21 AM by Anonymous... | 23.6 MB ... |
| VT-10 T-6A | 2 hours ago by Anonymous User | 204.1 MB ... |
| VT-4 MC2 | Feb 2, 2024 at 11:44 AM by Anonymou... | 812.8 MB ... |
| VT-86 T-45C | Feb 7, 2024 at 3:20 PM by Anonymous... | 734.5 MB ... |
| 1542.185A.pdf | Jan 25, 2024 at 2:11 PM by Anonymous... | 543 KB ... |
| 22 - 26 Jan v3.docx | Jan 25, 2024 at 2:15 PM by Anonymous... | 93 KB ... |
| CNATRA-NASC Box Content Mana... | Dec 28, 2023 at 3:11 PM by Kristi Kosina | 16 KB ... |
| CTW6 Hurricane Smart Pack 2024.... | Jan 16, 2024 at 10:06 AM by Anonymo... | 2 MB ... |
| Website Links.pdf | Jul 28, 2023 at 12:14 PM by Tony Andre... | 86 KB ... |





ForeFlight

Foreflight is an aviation application you will use during flight training. It provides aircrew with access to all DOD flight publications, and real time in-flight flight awareness when you EKB is tethered to a ADS-B in device, such as a Sentry ADS-B receiver.

The image displays the ForeFlight app interface on a tablet. The top navigation bar includes the ForeFlight logo (a sun with a plane) and the text "A Boeing Company". To the right of the logo are links for "PRODUCTS", "SOLUTIONS", "SUPPORT", and "COMPANY". Further right is a user profile icon labeled "JOHN" and a blue "UPGRADE" button. The main content area is titled "THE ESSENTIAL APP FOR AVIATION" in large white letters. Below this, a paragraph states: "Individual pilots and professional flight crews all over the world depend on ForeFlight's integrated flight app to make flying safer, easier, and more efficient." At the bottom left, there is a "Download on the App Store" button. The right side of the tablet screen shows a detailed flight display with a top section for "Aero & Winds (Bpe...)" and a bottom section for "Airspace & Icing". The top section includes a search bar, a "HIGHEST POINT 13,455'" indicator, a "CLEARANCE 2,137'" indicator, and a "ROUTE CORRIDOR 1 nm" indicator. The bottom section shows a weather map with various flight paths and waypoints labeled: KVMY, BETHL, GLD, PWE, JOT, CRL, and KTEB. The map also displays altitude markers like 160nm and 320nm.





ForeFlight

Foreflight is an aviation application you will use during flight training. It provides aircrew with access to all DOD flight publications, and real time in-flight flight awareness when you EKB is tethered to a ADS-B in device, such as a Sentry ADS-B receiver.

NOTE – Due to differences in email configuration, Aeromedical Officer (AMO) students will not be issued ForeFlight accounts. AMOs may skip this section.

FOR AVIATION

Individual pilots and professional flight crews all over the world depend on ForeFlight's integrated flight app to make flying safer, easier, and more efficient.

Download on the
App Store





ForeFlight Account

You will be asked to provide your Flank Speed email address when you are issued your EKB. Your Flank Speed email address, is your work email, which ends with @us.navy.mil.

That email address will be used to establish your ForeFlight account.

Once your account has been created by Griffith Hall staff, you will receive an email similar to what is shown below.

Select the link, which should launch your web browser and open the ForeFlight account creation page.

From: ForeFlight <team@foreflight.com>

Sent: Friday, April 16, 2021 8:40 AM

To: Boman, J T (T-Bone) CIV USN CTW-6 (USA) <john.boman@navy.mil>

Subject: [Non-DoD Source] TW-6 has added you to ForeFlight.

Hello Pilot,

TW-6 has created a ForeFlight account for you. The next step is to set your password by clicking the link below.

<https://plan.foreflight.com/setup/am9obi5ib21hbkBuYXZ5Lm1pbDtKQkRBTIFXRUpUSKY>

Thank you for your support and your business.

— Team ForeFlight





ForeFlight Account

NOTE:

Creating your account may take several days after you were issued your EKB. If you do not receive the ForeFlight email in five working days, please return to Griffith Hall and notify the TW-6 EKB manager or staff member.

As stated, your ForeFlight account user name is your Flank Speed email address. This email address should auto-populate when you access the ForeFlight account creation page.

After ensuring that it is correct, you may enter a password of your own choosing. Many students use “navair” to make it simple. You do you.

Once your account is created, save the information and close your browser. You will now use that information to create an association between ForeFlight and the ForeFlight application on your EKB.





ForeFlight App Log In

- NOTE: You must have set up your ForeFlight account on line prior to continuing.
- From the home screen, select the ForeFlight application icon.



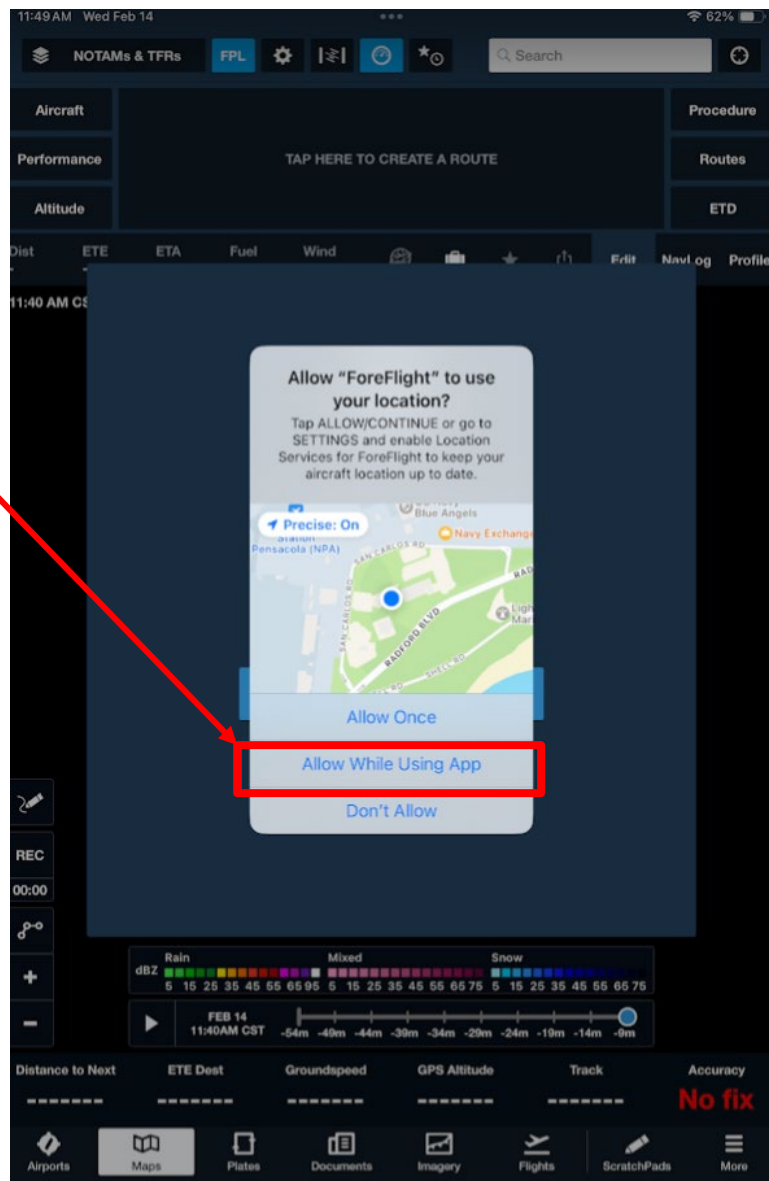


ForeFlight App Log In

- You should see this screen.
- Select “Allow While Using App”

NOTE: You may select any choice, but be aware Primary students are not allowed to use Location Services during flight training events. If you allow it for the initial set up, you will need to disable it after at some point later. Your Instructor Pilot will discuss this further.

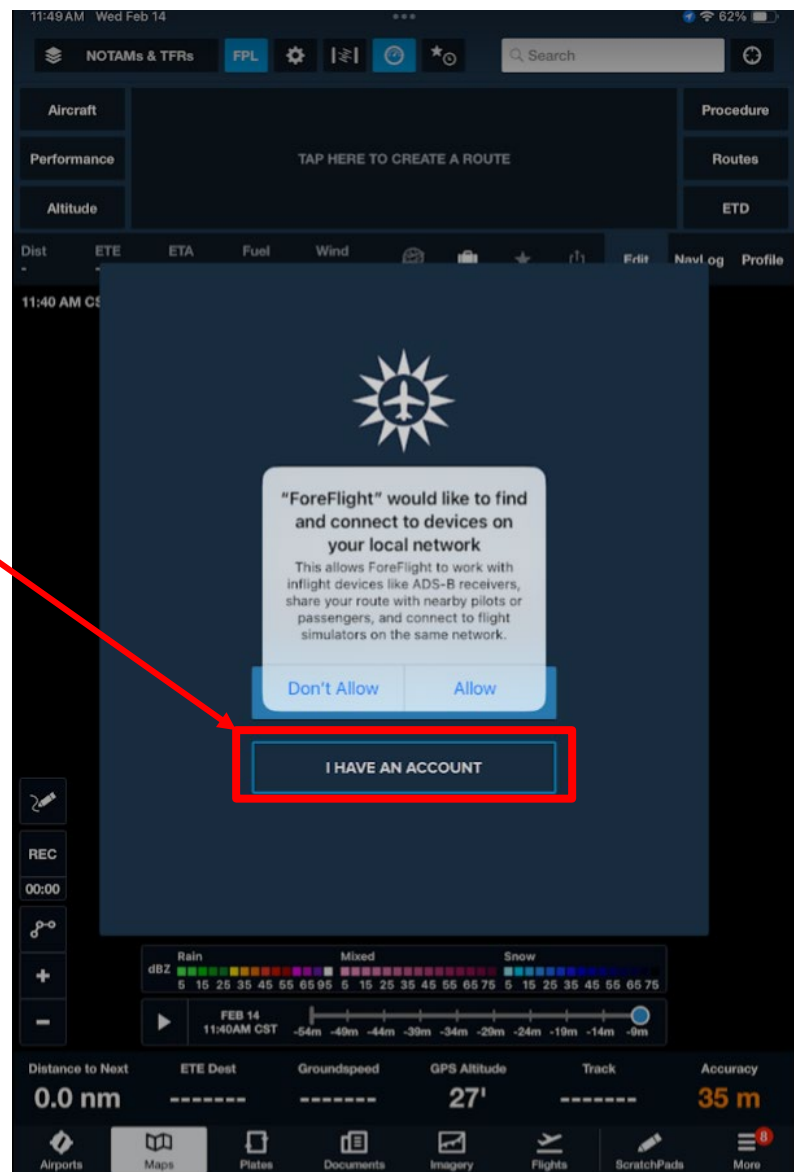
Location services does not function in the simulator.





ForeFlight App Log In

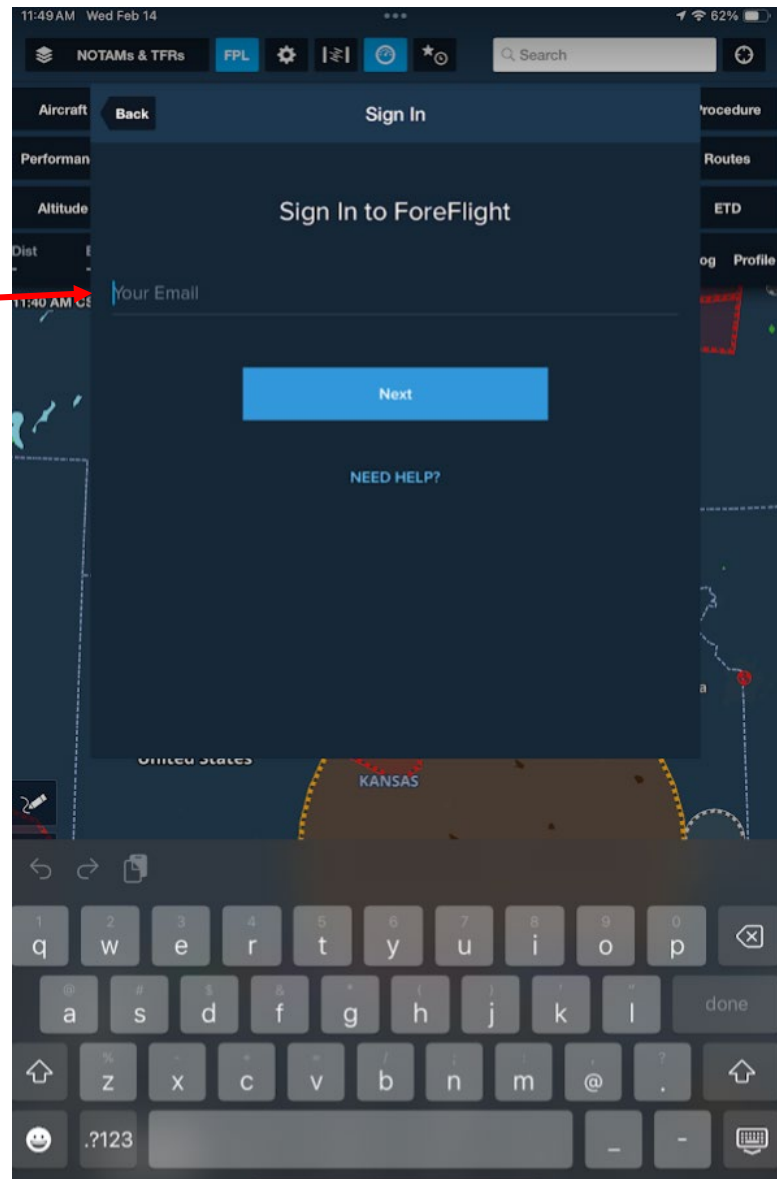
- You should see this screen.
- Select “Don’t Allow”
- Select “I Have An Account”





ForeFlight App Log In

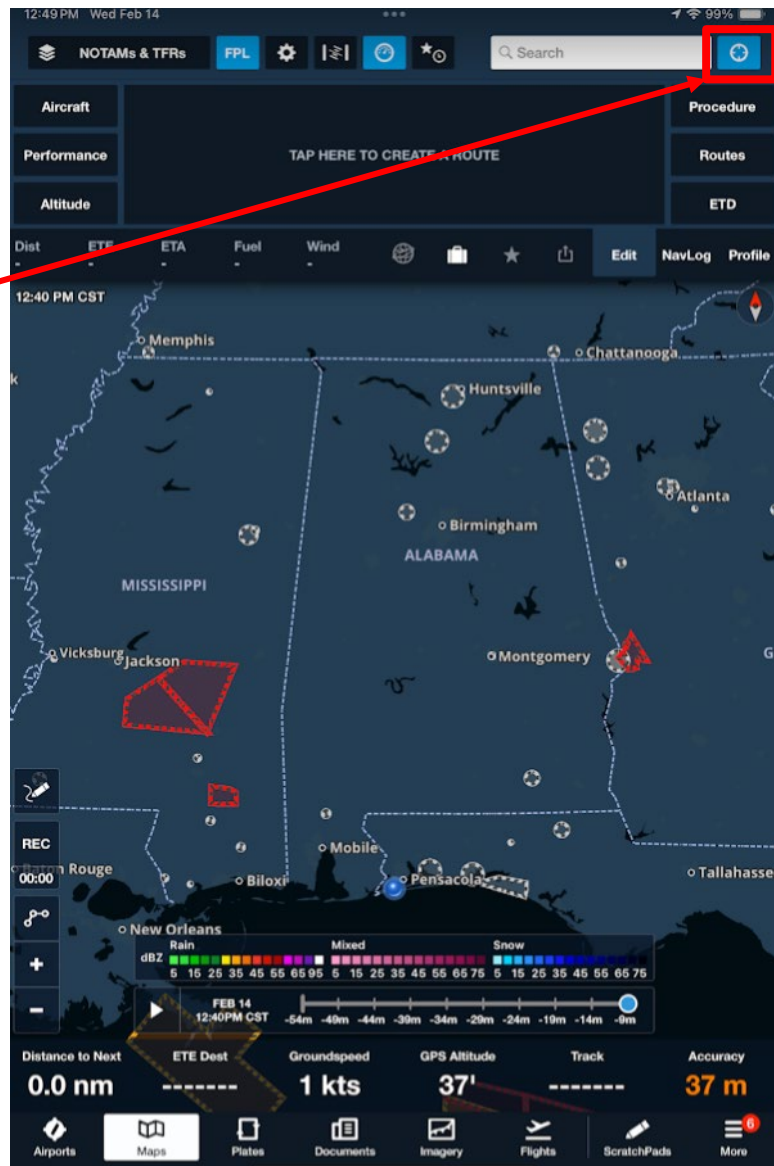
- You should see this screen.
- Enter your Flank Speed email address.
- Select “Next”
- Enter the password you created on the ForeFlight web site.
- Once signed in, select “I Agree” for the User Agreement.
- Activate Automatic Downloads.





ForeFlight App Log In

- You should see now this screen.
- Tap this icon to relocate the map to your current location.





Electronic Knee Board

- This concludes the initial set up of your EKB. You have also configured the two primary applications you will use during flight training.
- You are allowed to install other applications from the catalog, and you are allowed to change any setting the device permits you to do so.
- You are also allowed to share content via AirDrop, to include from the EKB to your personal device.
- You are required to bring your EKB to Fam Ground School following Day 1 check in with VT-10.





Additional Resources

- ForeFlight website has many useful features once user profile setup.
<https://www.foreflight.com/>
- ForeFlight has a searchable library of “How To” Videos available at:
<https://www.foreflight.com/support/video-library/>
- ForeFlight User Guide available at: <https://www.foreflight.com/support/support-center/>
or click here: [“Pilot’s Guide to ForeFlight Mobile”](#)
- For issues concerning EKB malfunctions, ForeFlight accounts, or BOX access, may contact the CTW-6 Ground Training Officer via email at john.t.boman.civ@us.navy.mil or by phone at (850) 452-2172. The GTO’s office is located in Griffith Hall, room 112.

